

OVERVIEW / SPECIFICATION



Asymmetric Louver



Symmetric Louver

The EcoSpec® Asymmetrical and Symmetrical Louver for the Linear HP INT and EXT Wall Wash provides glare control and sight line reduction while maintaining full performance of the fixture output and distribution for applications that require these additional measures. The sheet metal is stamped and formed into lengths to match the fixture and four screws mount the accessory directly to the side of the fixture extrusion without need for any additional parts.

The Symmetrical (Full) Louver has full height glare control on four (4) sides and the Asymmetrical (Half) Louver has one broad side with reduced height to eliminate cutoff shadow against a lighted wall. The Louvers are double plated, then epoxy powder coated for long life and superior corrosion resistance. The Louvers are the same length as their respective fixtures, 12" and 48".

PHYSICAL	Material(s)	Aluminum Sheet Metal
	Finish	Black
	Lengths	12" (306mm) / 48" (1221mm)

ORDERING

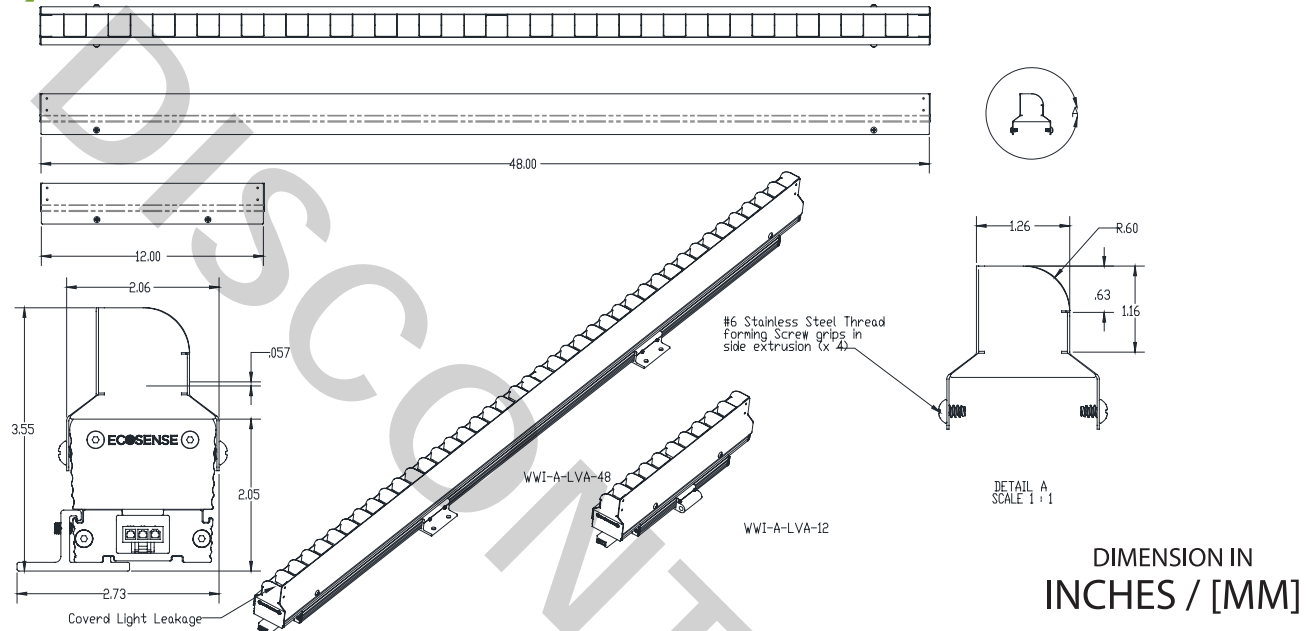
Choose the option that best suits your needs and write its corresponding code on the appropriate line to form the product code

WWI / WWE	-	A			
MODEL			TYPE		LENGTH
WWI - Linear HP WW INT			LVA - Asymmetric		12 - 12"
WWE - Linear HP WW EXT			LVS - Symmetric		48 - 48"
EXAMPLE: WWI* - A - LVA - 12 (*W _{all} W _{ash} Interior)					

DIMENSIONS

For complete dimensions and submittal drawings, please visit:
ecosenselighting.com

Asymmetric Louver - Linear HP WW INT



Symmetric Louver - Linear HP WW INT

