

ECOSENSE[®]

TROV Slim[®]

Light efficiency:

87 Lumen/Watt

Light quality:

CRI: 92.4

Color temperature:

2720 K

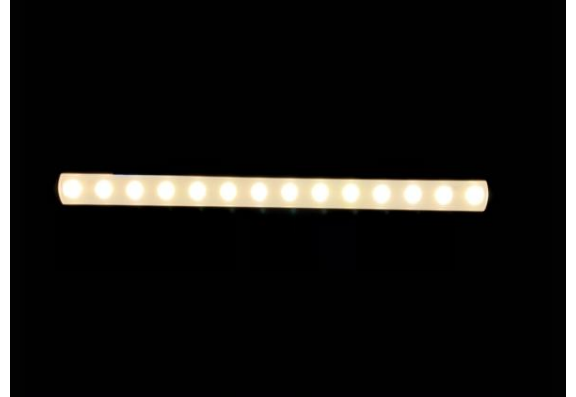
Output: 676 lm

Peak: 251 cd

Power: 7.8 W

PF: 0.98

8 PLANES



SKU:

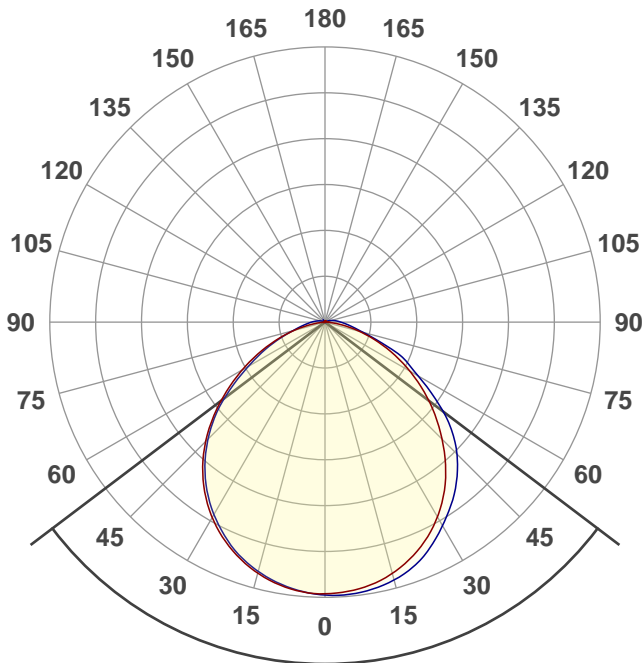
L30-I-12-08-27-90-MULT-120

Date and time:

1/26/2021 12:53:05 PM

Product name:

12" 2700K 90CRI 8Watt



Beam angle

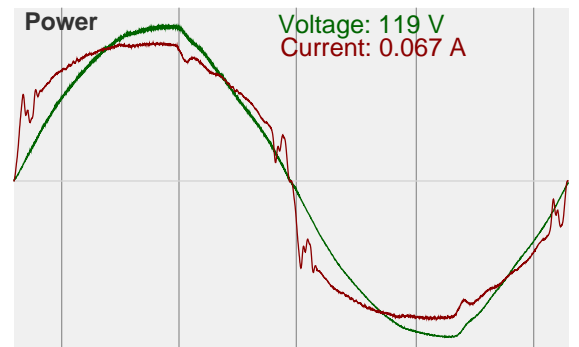
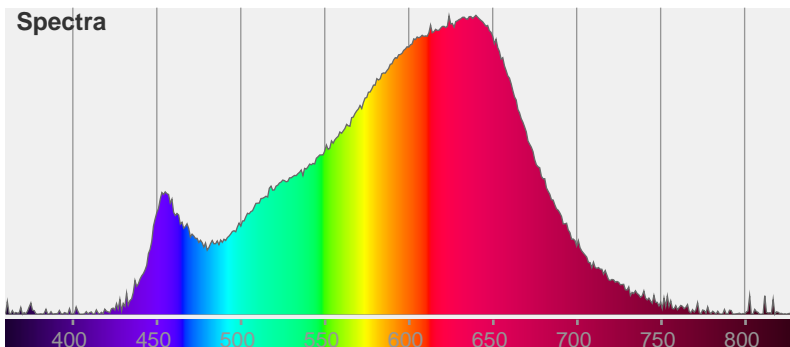
105.8°

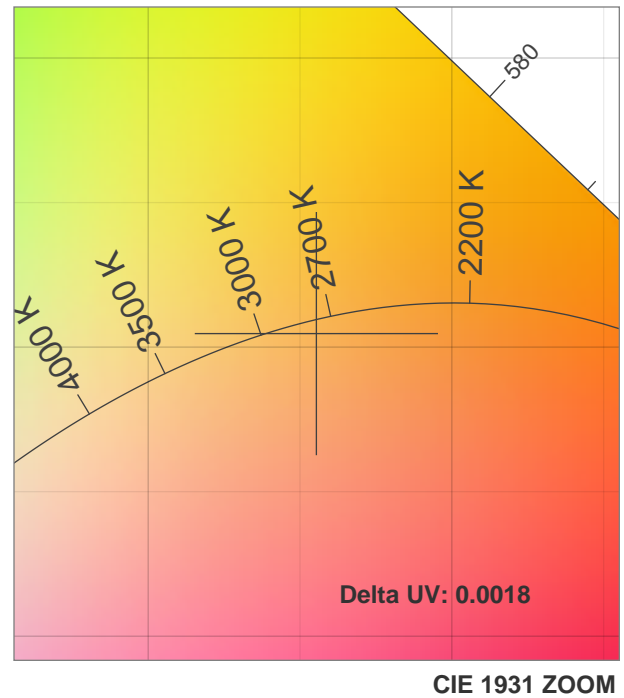
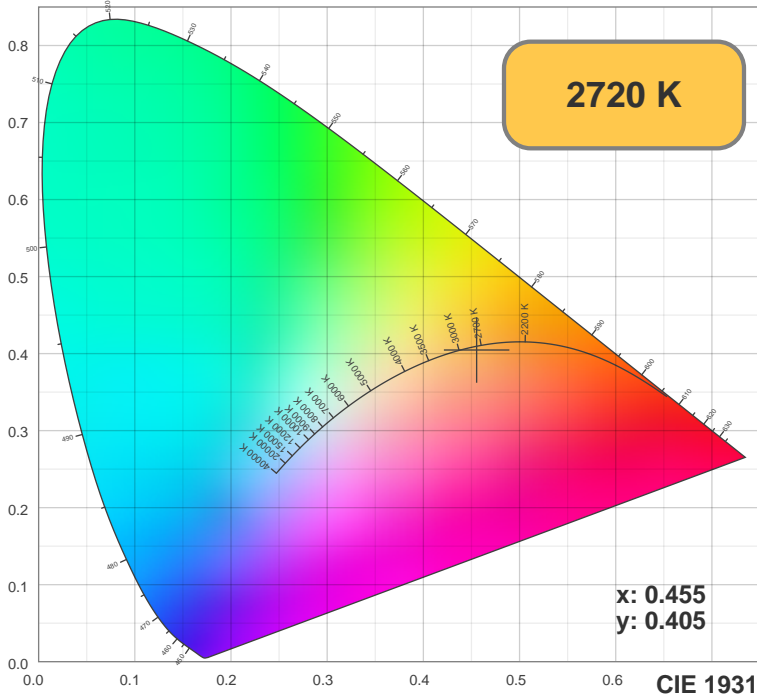
Color



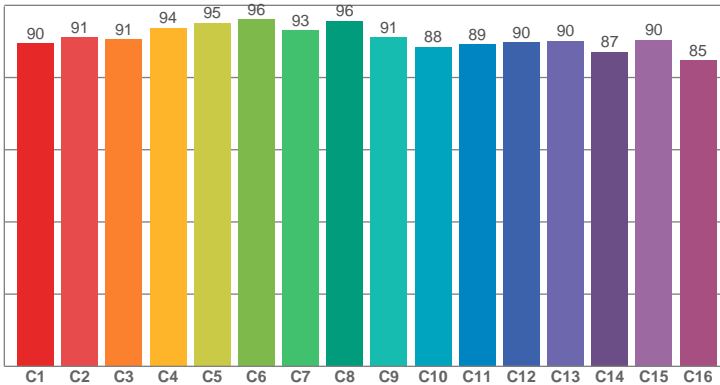
CIE1931
x: 0.455
y: 0.405

Spectra

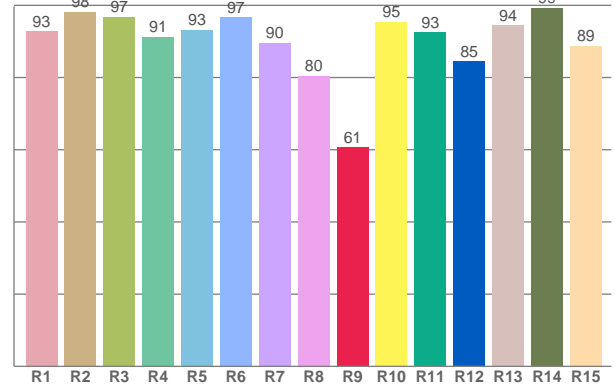




TM30: 90.9



CRI: 92.4 (R1-R8)



CRI R values, only R1-R8 are used to calculate final CRI value

R1	R2	R3	R4	R5	R6	R7	R8	R9	R10	R11	R12	R13	R14	R15
89.53	98.15	96.84	91.25	93.17	96.72	89.66	80.46	60.58	95.44	92.59	84.51	94.41	99.26	88.80

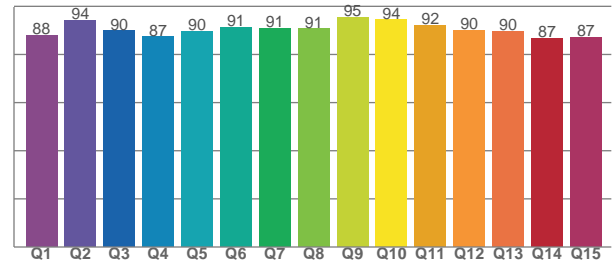
TM30 C values, 16 binned values out of total of 99 C values

C1	C2	C3	C4	C5	C6	C7	C8	C9	C10	C11	C12	C13	C14	C15	C16
89.53	91.20	90.55	93.71	95.14	96.04	93.10	95.68	91.20	88.49	89.26	89.77	90.20	87.08	90.48	84.84

CQS Q values

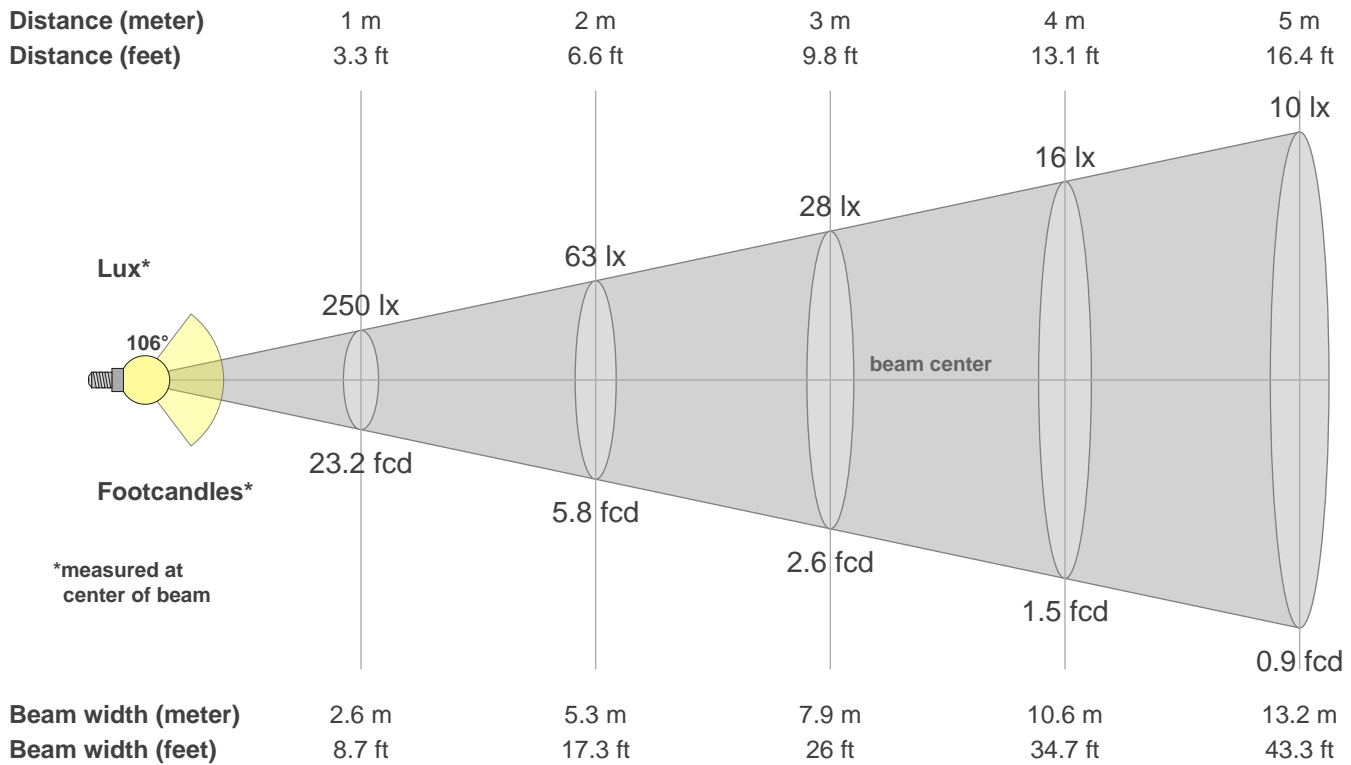
Q1	Q2	Q3	Q4	Q5	Q6	Q7	Q8	Q9	Q10	Q11	Q12	Q13	Q14	Q15
88.01	94.26	89.84	87.29	89.52	91.40	90.97	90.65	95.49	94.41	92.14	90.16	89.71	86.83	87.12

CQS: 90.1



Color parameters

CCT	CRI	CRI R9	TM30 Rf	TM30 Rg	CQS	x	y	u	v	Duv
2720 K	92.4	60.6	90.9	98.1	90.1	0.5	0.4	0.3	0.3	-0.0018



Intensities in 0° c-plane

0°	5°	10°	15°	20°	25°	30°	35°	40°	45°	50°	55°	60°	65°	70°	75°	80°	85°	90°	95°
250	248	245	239	231	220	206	191	172	152	132	111	90	70	50	33	18	7	1	0
100%	99%	98%	96%	92%	88%	83%	76%	69%	61%	53%	44%	36%	28%	20%	13%	7%	3%	0%	0%

Intensities in 90° c-plane

0°	5°	10°	15°	20°	25°	30°	35°	40°	45°	50°	55°	60°	65°	70°	75°	80°	85°	90°	95°
250	251	249	245	238	228	216	203	188	171	150	125	99	80	56	37	26	19	15	11
100%	100%	100%	98%	95%	91%	86%	81%	75%	68%	60%	50%	40%	32%	22%	15%	10%	8%	6%	4%

Intensities in 180° c-plane

0°	5°	10°	15°	20°	25°	30°	35°	40°	45°	50°	55°	60°	65°	70°	75°	80°	85°	90°	95°
250	248	245	239	230	220	207	192	175	155	133	110	88	67	47	30	15	4	1	1
100%	99%	98%	95%	92%	88%	83%	77%	70%	62%	53%	44%	35%	27%	19%	12%	6%	2%	0%	0%

Intensities in 270° c-plane

0°	5°	10°	15°	20°	25°	30°	35°	40°	45°	50°	55°	60°	65°	70°	75°	80°	85°	90°	95°
250	248	244	237	228	217	204	189	172	152	130	105	82	62	45	31	22	16	13	9
100%	99%	97%	95%	91%	87%	82%	76%	69%	61%	52%	42%	33%	25%	18%	12%	9%	7%	5%	4%

Beam angle 50%	Field angle 10%	Cutoff angle 2.5%	Intensity ratio in 120° cone	Intensity ratio in 90° cone
105.8°	158.0°	189.5°	79.9%	55.8%