

NOTES:

- THIS CRITICAL DIMENSION DRAWING, IN CONJUNCTION WITH THE ASSOCIATED 3D MODEL, SPECIFIES THE PART. ALL UNDIMENSIONED GEOMETRY IS TO BE CONSIDERED NOMINAL AND MUST ADHERE TO DIN ISO 2768 T1 CLASS M RELATIVE TO THE 3D MODEL. REFERENCE THE ASSOCIATED 3D MODEL FOR PART FABRICATION. SEE TABLE 1 FOR DIN ISO 2768 T1 REFERENCE.
- DIMENSIONS WITH A  $\diamond$ , EXAMPLE:  $\diamond 12.5$ , ARE CRITICAL TO PART FUNCTION. NO DEVIATION OR TOLERANCE WAIVER IS PERMISSIBLE. DIMENSIONS WITH AN OVAL, EXAMPLE:  $\textcircled{\phi 12.5}$ , ARE INSPECTION DIMENSIONS FOR PRODUCTION LOT INSPECTION. DIMENSIONS WITH PARENTHESES, EXAMPLE:  $(\phi 12.5)$ , ARE FOR REFERENCE ONLY. TOLERANCE CONTROL IS NOT IMPOSED. DIMENSIONS WITH AN ASTERISK, EXAMPLE:  $\phi 12.5^*$ , REFERENCE ONE OR MORE VIRTUAL INTERSECTIONS.
- DIMENSIONS MAY HAVE AN IDENTIFICATION FLAG SUCH AS  $\textcircled{2}$  TO AID INSPECTION AND REPORTING.
- UNLESS OTHERWISE NOTED, ALL SURFACES MUST MEET CLASS 4 QUALITY REQUIREMENTS PER PTR-000020-00. SURFACES INDICATED WITH  $\textcircled{C1}$ ,  $\textcircled{C2}$ , OR  $\textcircled{C3}$  MUST MEET CLASS 1, CLASS 2, OR CLASS 3 QUALITY REQUIREMENTS PER PTR-000020-00.
- MATERIAL: SUS 304, 0.3MM THICK, NATURAL COLOR
- FINISH: N/A
- TOOLING MUST BE APPROVED BY THE ECOSENSE ENGINEERING DEPT. BEFORE TOOL FABRICATION. TOOL DESIGN DRAWINGS SHALL BE SUPPLIED PRIOR TO TOOL FABRICATION APPROVAL.
- DEBUR AND BREAK SHARP EDGES

REVISIONS			
REV.	DESCRIPTION	DATE	APPROVED
A	RELEASE TO PRODUCTION	4/8/2020	Y. HUANG
B	REMOVED THE HOOK FEATURES IN THE MIDDLE TAB	9/17/2020	Y. HUANG

D

D

C

C

B

B

A

A

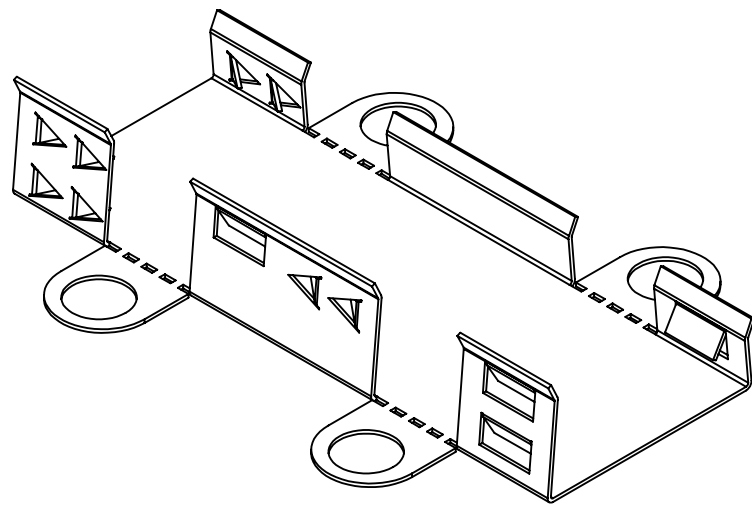
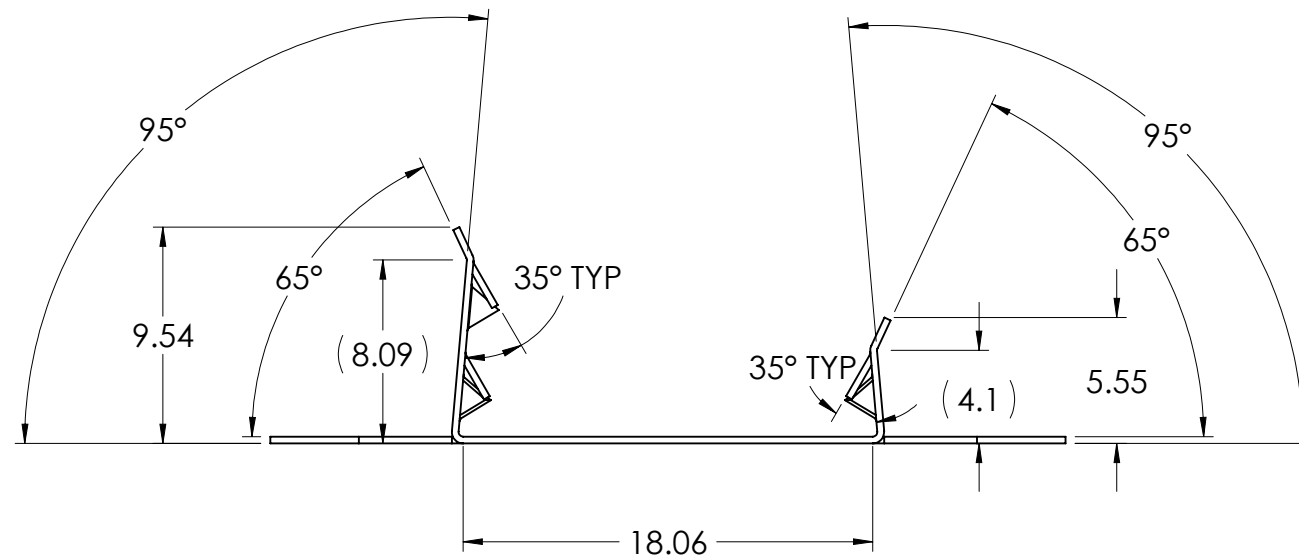
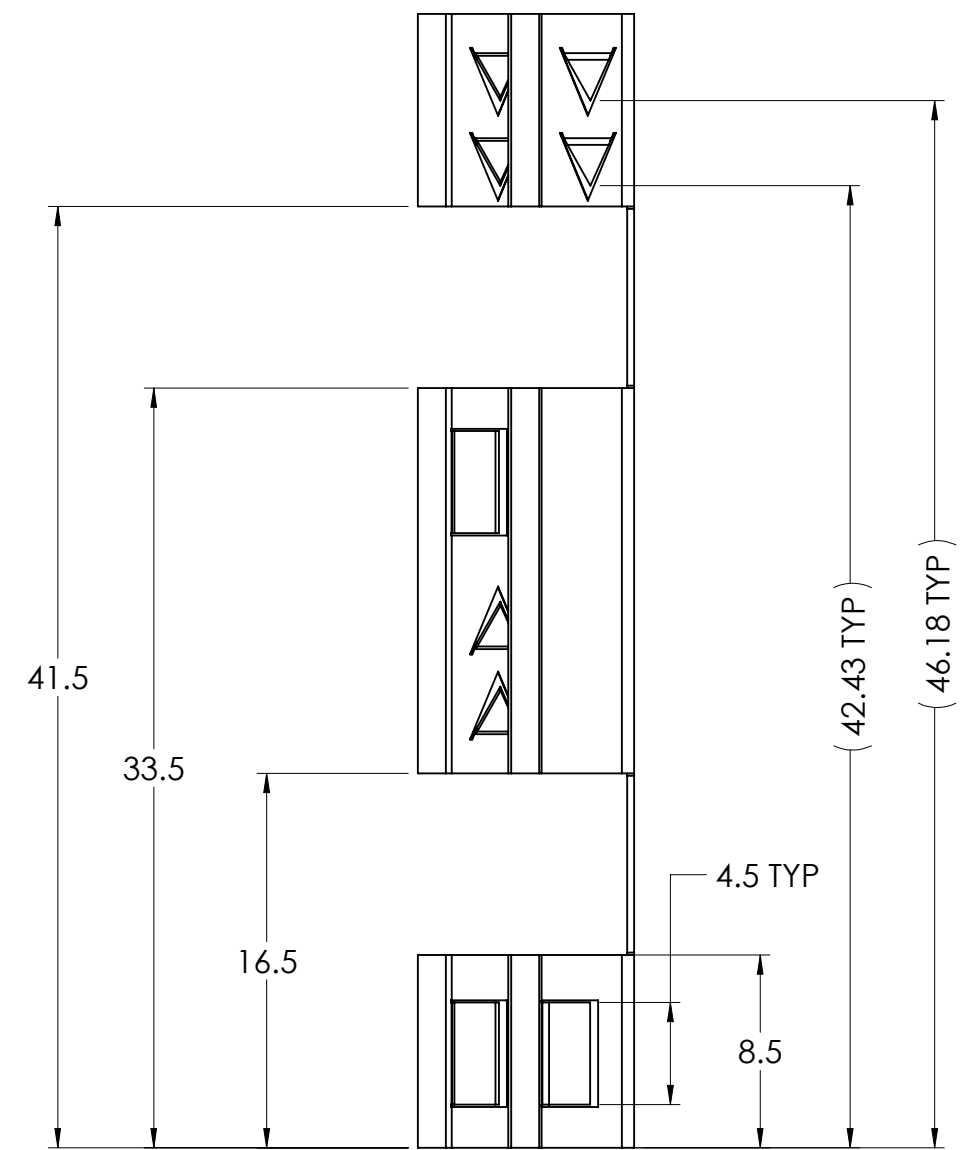
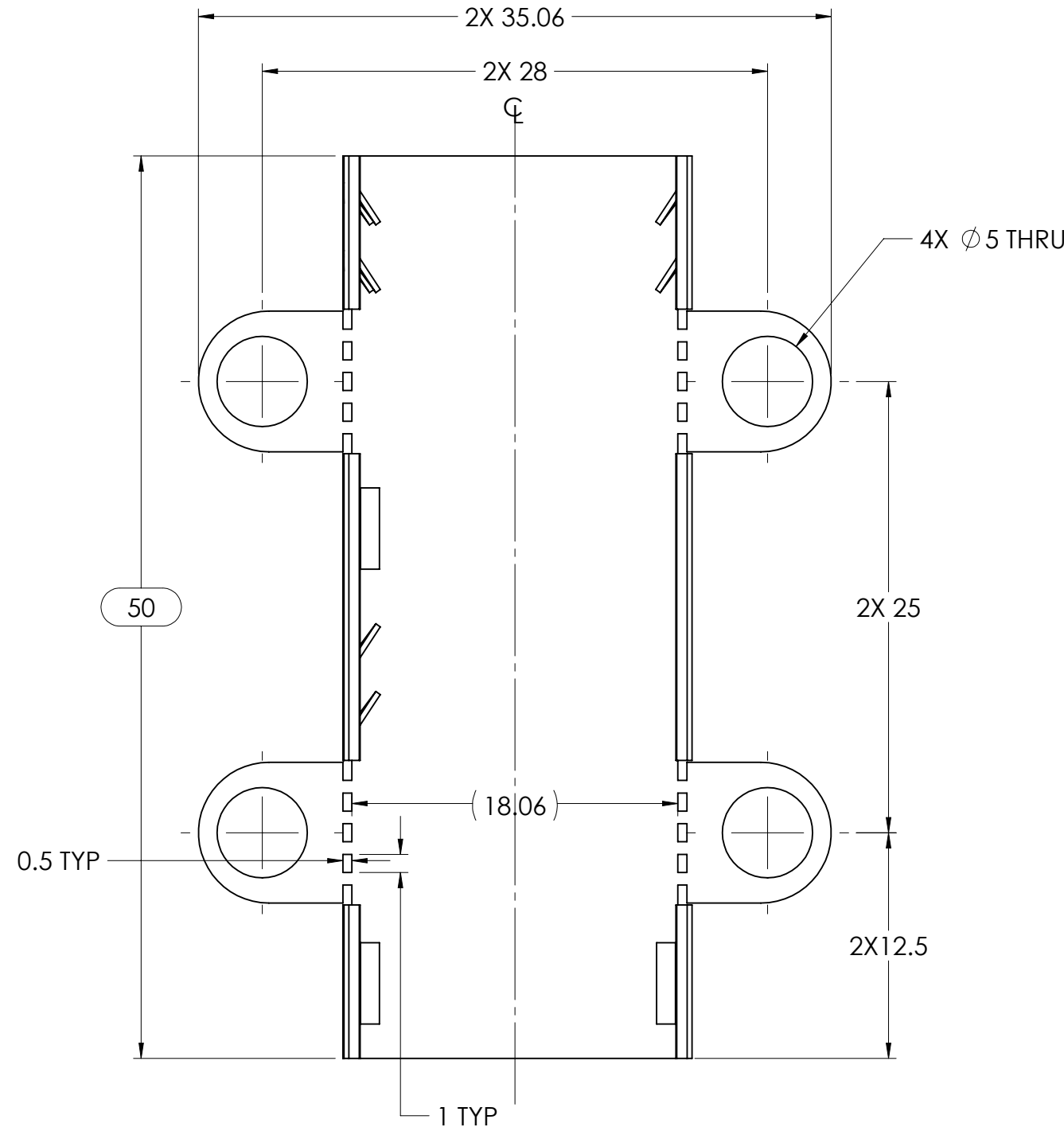
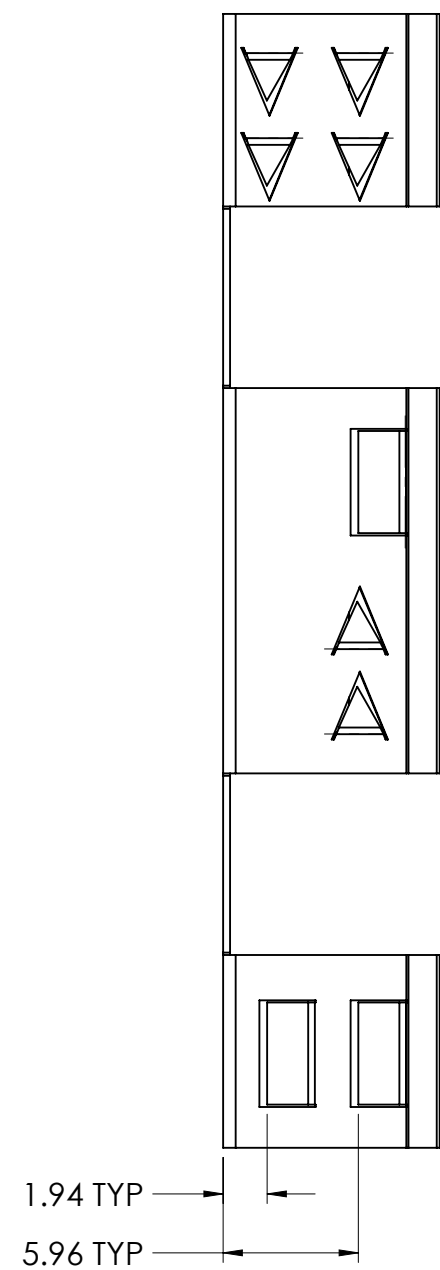


TABLE 1 - SELECTED CLASSES OF DIN ISO 2768 T1

TOLERANCE CLASS	LINEAR DIMENSION TOLERANCES - NOMINAL SIZE RANGE IN mm				
	.5 < DIM ≤ 3	3 < DIM ≤ 6	6 < DIM ≤ 30	30 < DIM ≤ 120	120 < DIM ≤ 400
F (FINE)	±0.05	±0.05	±0.1	±0.15	±0.2
M (MEDIUM)	±0.1	±0.1	±0.2	±0.3	±0.5
TOLERANCE CLASS	RADI AND CHAMFERS			ANGLES	
	.5 < DIM ≤ 3	3 < DIM ≤ 6	6 < DIM	SHORT LEG ≤ 10	10 < LEG ≤ 50
M (MEDIUM)	±0.2	±0.5	±1	±1°	±30°

**PROPRIETARY AND CONFIDENTIAL**

UNLESS OTHERWISE SPECIFIED

**ECOSENSE**

TITLE: TROV Flex L09, Mounting Bracket

DRAWN BY: Y. HUANG | DATE DRAWN: 2020-04-08 | DRAWING NUMBER: BKT-000364-00 | REV: B

PROJECT ENGINEER: Y. HUANG | THIRD ANGLE PROJECTION

THE INFORMATION CONTAINED IN THIS DRAWING IS THE SOLE PROPERTY OF ECOSENSE LIGHTING, INC. ANY REPRODUCTION IN PART OR AS A WHOLE WITHOUT THE WRITTEN PERMISSION OF ECOSENSE LIGHTING IS PROHIBITED. © 2017 ECOSENSE LIGHTING, INC.

DIMENSIONS ARE IN MILLIMETERS

TOLERANCES PER DIN ISO 2768 T1 CLASS M (MEDIUM)

INTERPRET GEOMETRIC TOLERANCING PER: ASME Y14.5

SIZE: C | SCALE: 3:1 | SHEET: 1 OF 1