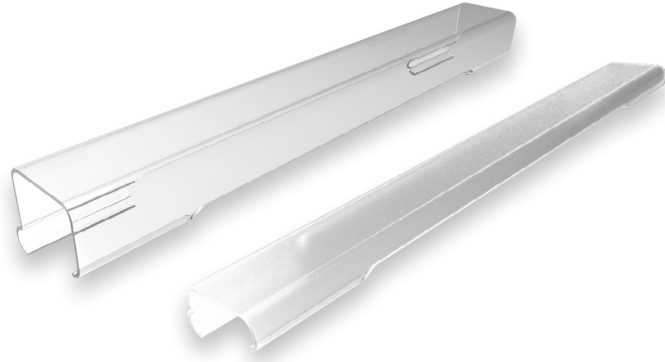


DATE	PROJECT	FIRM	TYPE
------	---------	------	------

TROV SNAP ON FROSTED AND CLEAR LENSES ARE USED TO RESPECTIVELY DIFFUSE LIGHT FOR APPLICATIONS WHERE THE FIXTURE IS VISIBLE AND HOLD COLORING FILMS (FILM SUPPLIED AND INSTALLED BY 3RD PARTY)

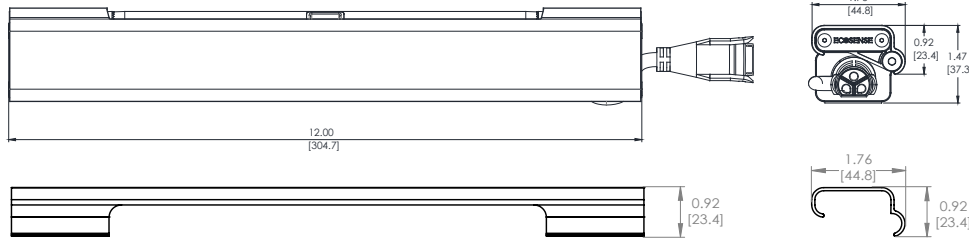
FEATURES :

- COMPATIBLE WITH L35 AND L50 SERIES FIXTURES
- OPTIONS OF 1FT OR 4FT SNAP-ON SECTIONS
- EASY TO INSTALL IN THE FIELD

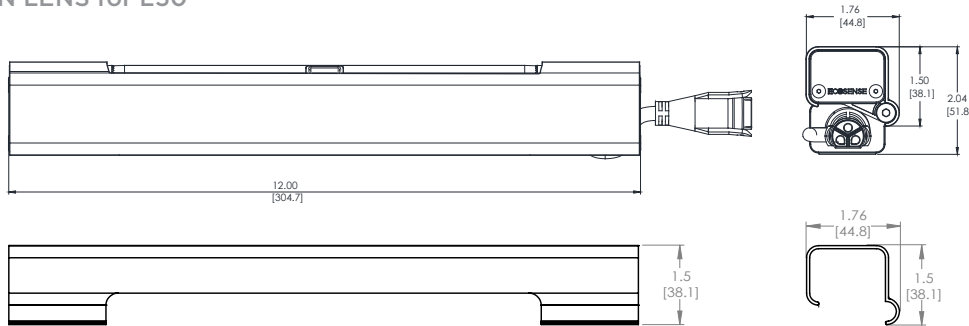


PHYSICAL	L35 L50	DIMENSIONS DIMENSIONS MATERIAL	W 1.76" x H 0.92" x L 12/48" ; (44.8mm x 23.4mm x 304mm/1201mm) APPROX W 1.76" x H 1.5" x L 12/48" ; (44.8mm x 38.1mm x 304mm/1201mm) APPROX POLYCARBONATE
----------	------------	--------------------------------------	--

SNAP ON LENS for L35



SNAP ON LENS for L50



When using 3rd party films cut to 1.25" wide. Cut length to 12" for the 12" fixture and 47.3" for the 48" fixture.

ORDERING

TYPE	MODEL/SIZE	FINISH	LENGTH
LENS	L35 L50	FROST CLEAR	12 - 12" 48 - 48"

EXAMPLE LENS-L35-CLEAR-12

LIMITED WARRANTY 5 YEARS

ECOSENSE LIGHTING INC.
837 NORTH SPRING STREET
SUITE 103
LOS ANGELES, CA 90012

P • 310.496.6255
F • 310.496.6256
T • 855.632.6736
855.6.ECOSEN

SPECIFICATIONS SUBJECT TO CHANGE WITHOUT NOTICE. VISIT
ECOSENSELIGHTING.COM FOR THE MOST CURRENT SPECIFICATIONS.
© 2017 ECOSENSE LIGHTING INC. ALL RIGHTS RESERVED. ECOSENSE,
THE ECOSENSE LOGO, RISE, TROV, SLIM COVE AND ECOSPEC ARE
REGISTERED TRADEMARKS OF ECOSENSE LIGHTING INC.
FREEDOM TO CREATE™

ECOSENSELIGHTING.COM

1/1