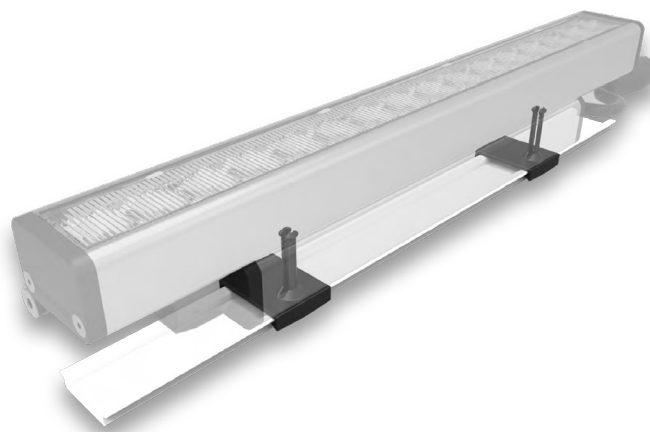


DATE	PROJECT	FIRM	TYPE
------	---------	------	------

TROV MOUNTING TRACKS AND CLIPS ARE USED WHEN THE MOUNTING NEEDS TO BE DONE BEFORE THE FIXTURES. THE TRACK CAN BE SCREWED INTO PLACE BEFORE THE SPACE IS FINISHED. PAINTING AND PLASTERING CAN BE DONE WITH THE TRACK INSTALLED. THE CLIPS ARE SNAPPED INTO THE FIXTURE AND THEN SNAPPED ON THE TRACK MAKING FINAL INSTALLATION EASIER

**FEATURES :**

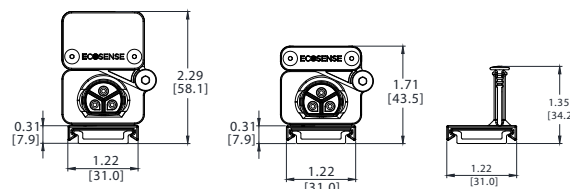
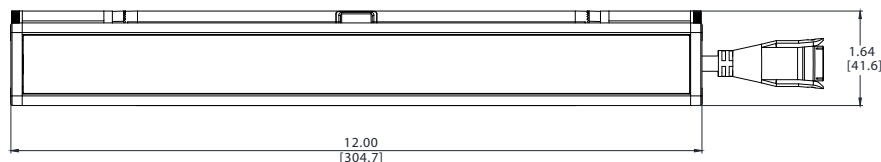
- COMPATIBLE WITH L35 AND L50 SERIES FIXTURES
- AVAILABLE IN 1FT AND 4FT SETS

**PHYSICAL****DIMENSIONS  
MATERIAL**

W 1.3" x H 3.98" x L 12/48" ; (33.1mm x 101mm x 304.7/1201mm) APPROX  
TRACK: WHITE POLYCARBONATE ; CLIPS: BLACK POLYCARBONATE

**MOUNTING TRACK AND CLIPS for L35 AND L50**

**For Interior Use Only**  
Pour usage intérieur uniquement

**L50 SERIES****L35 SERIES****ORDERING**

PART NUMBER	DESCRIPTION
MNT-L-TRKCLIP-48	MOUNTING TRACK AND CLIPS SET, 48 INCH TRACK, 8 CLIPS
MNT-L-TRKCLIP-12	MOUNTING TRACK AND CLIPS SET, 12 INCH TRACK, 2 CLIPS

**48" TRACK AND CLIPS SET WILL WORK WITH ONE 48" FIXTURE OR FOUR 12" FIXTURES. 12" TRACK WILL NOT WORK WITH 48" FIXTURES.**

**LIMITED WARRANTY 5 YEARS**

**ECOSENSE®**

**ECOSENSE LIGHTING INC.**  
837 NORTH SPRING STREET  
SUITE 103  
LOS ANGELES, CA 90012

**P • 310.496.6255**  
**F • 310.496.6256**  
**T • 855.632.6736**  
855.6.ECOSEN

SPECIFICATIONS SUBJECT TO CHANGE WITHOUT NOTICE. VISIT [ECOSENSELIGHTING.COM](http://ECOSENSELIGHTING.COM) FOR THE MOST CURRENT SPECIFICATIONS.  
© 2019 ECOSENSE LIGHTING INC. ALL RIGHTS RESERVED. ECOSENSE, THE ECOSENSE LOGO, RISE, TROV, SLIM COVE AND ECOSPEC ARE REGISTERED TRADEMARKS OF ECOSENSE LIGHTING INC.  
**FREEDOM TO CREATE™**