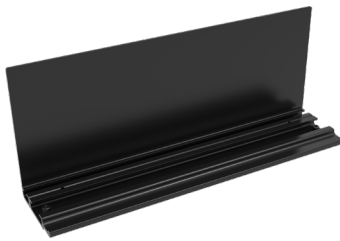
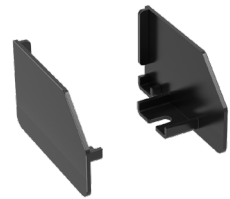


DATE	PROJECT	FIRM	TYPE
------	---------	------	------

THE TROV L45 AND L60 WALL MOUNT ARM SYSTEM ALLOWS THE FIXTURE TO BE SET BACK FROM THE WALL WITH 6IN, 12IN, 18IN, AND 24IN OFFSETS. WALL ARMS CAN MOUNT OVER A 4IN ROUND J-BOX OR DIRECTLY TO A WALL IN UP OR DOWN LIGHTING APPLICATIONS. THE LEADER CABLE IS CONCEALED IN THE ARM AND TERMINATES INTO A J-BOX OR EXITS OUT THE SIDE OF THE CANOPY TO RUN TO A REMOTE J-BOX. THE FIXTURES ARE MOUNTED IN TRAYS THAT CONCEAL IT FROM VIEW AND ARE HELD TO THE ARM WITH A ROBUST CLAMPING MECHANISM. WALL ARMS CAN BE USED IN CONTINUOUS RUN OR INDIVIDUAL FIXTURE MOUNT CONFIGURATIONS.

FEATURES:

- ROBUST DESIGN THAT CONCEALS THE FIXTURE AND LOUVERS
- DESIGNED FOR UP AND DOWN LIGHT APPLICATIONS
- OUTDOOR RATED FOR IP66 APPLICATIONS
- COMPATIBLE WITH L45 AND L60
- 1FT AND 4FT FIXTURE MOUNTING TRAY LENGTHS
- SURFACE MOUNT OR JUNCTION BOX MOUNT
- LEADER CABLE IS HIDDEN INSIDE THE ARM AND CAN TERMINATE INSIDE A J-BOX OR EXIT OUT THE SIDE OF THE CANOPY

**Wall Mount Arm****Fixture Mounting Tray****End Caps****PHYSICAL****MATERIAL****FINISH****ENVIRONMENT****LIMITED WARRANTY****5 YEARS**

MOUNTING ARMS = STEEL; TRAYS = EXTRUDED ALUMINUM; END CAPS = CAST ALUMINUM
POWDER COAT
OUTDOOR, IP66, WET LOCATION

ORDERING**PART NUMBER**

L45L60-A-WMA-CA-06-(K,W,S*,Z*,C*)

L45L60-A-WMA-CA-12-(K,W,S*,Z*,C*)

L45L60-A-WMA-CA-18-(K,W,S*,Z*,C*)

L45L60-A-WMA-CA-24-(K,W,S*,Z*,C*)

L45L60-A-WMA-TRAY-12-(K,W,S*,Z*,C*)

L45L60-A-WMA-TRAY-48-(K,W,S*,Z*,C*)

L45L60-A-WMA-ENDCAPS-(K,W,S*,Z*,C*)

DESCRIPTION

TROV L45 L60, Wall Mount Assm, 6in Arm, (Black, White, Silver, Bronze, Custom)

TROV L45 L60, Wall Mount Assm, 12in Arm, (Black, White, Silver, Bronze, Custom)

TROV L45 L60, Wall Mount Assm, 18in Arm, (Black, White, Silver, Bronze, Custom)

TROV L45 L60, Wall Mount Assm, 24in Arm, (Black, White, Silver, Bronze, Custom)

TROV L45 L60, Wall Mount Assm, 12in Tray (1 per 12in Fixture), (Black, White, Silver, Bronze, Custom)

TROV L45 L60, Wall Mount Assm, 48in Tray (1 per 48in Fixture), (Black, White, Silver, Bronze, Custom)

TROV L45 L60, Wall Mount Assm, End Cap Set (1 Per Run), (Black, White, Silver, Bronze, Custom)

NOTES: *Silver, Bronze, and Custom finishes are build-to-order. Longer lead-times and increased pricing apply.

- One arm needed for 12in fixture and two needed per 48in fixture. One 12in tray per 12in fixture and one 48in tray needed per 48in fixture.
- One End Cap set is needed per run or individual fixture. End caps sets include left and right end caps.
- Fixtures mount directly to the trays with provided hardware. No additional hardware is needed to mount fixtures.
- Trays include joiner plates and are discarded when not joining to other trays.
- Hardware to mount the arm to the mounting surface to be provided by others.
- Arms clamp within 3in of the center of the 12in tray and anywhere within 18in of the ends on the 48in trays. Clamps must not extend past the end of the trays.

DATE	PROJECT	FIRM	TYPE
------	---------	------	------

WALL ARM DIMENSIONS

