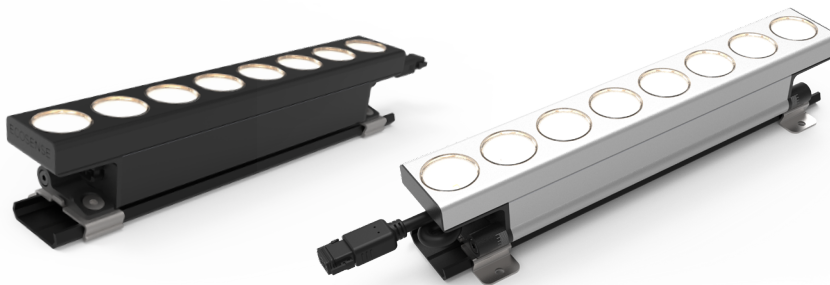


DATE	PROJECT	FIRM	TYPE
------	---------	------	------

TROV L45 AND L60 MOUNTING TRACK MAKES INSTALLATION EASIER AND ENSURES THE FIXTURES ARE INSTALLED IN STRAIGHT RUNS. THE TRACK CAN BE INSTALLED UPRIGHT, INVERTED, AND VERTICAL. THE TRACK CAN BE USED IN TIGHT SPACES BEFORE CONSTRUCTION IS COMPLETED, ALLOWING THE FIXTURE TO SIMPLY SNAP IN PLACE WHEN THERE IS LIMITED SPACE TO WORK WITHIN. THE MOUNTING CLIPS ARE SCREWED TO THE FEET OF THE FIXTURE AND INCLUDE A MOUNTING HOLE THAT CAN BE USED TO SCREW THEM IN PLACE FOR INCREASED HOLDING STRENGTH FOR INVERTED AND VERTICAL INSTALLATIONS.

FEATURES:

- EXTRUDED ALUMINUM FOR INCREASED STRENGTH
- PREDRILLED MOUNTING HOLES EVERY 4IN FOR #10 HARDWARE
- STAINLESS STEEL MOUNTING CLIPS FOR SECURE MOUNTING
- OUTDOOR RATED FOR IP66 APPLICATIONS
- COMPATIBLE WITH L45 AND L60
- FOR USE IN UPRIGHT, INVERTED, AND VERTICAL APPLICATIONS
- 1FT AND 4FT LENGTHS
- FIELD CUTTABLE

**L45 with Mounting Track and Clips****Mounting Clips**

PHYSICAL	MATERIAL FINISH ENVIRONMENT MOUNTING	TRACK = EXTRUDED ALUMINUM 6063-T5; CLIPS = STAINLESS STEEL 304 TRACK = POWDER COAT; CLIPS = UNFINISHED STAINLESS STEEL OUTDOOR, IP66, WET LOCATION TRACK = #10 MOUNTING HOLES EVERY 4IN CLIPS = #10 HARDWARE RECOMMENDED FOR INVERTED AND REQUIRED FOR VERTICAL INSTALLATIONS
-----------------	---	---

LIMITED WARRANTY 5 YEARS**LIMITED WARRANTY**

L45L60-A-MNT-TRACK-12-W
 L45L60-A-MNT-TRACK-48-W
 L45L60-A-MNT-TRACK-12-K
 L45L60-A-MNT-TRACK-48-K
 L45L60-A-MNT-CLIP

DESCRIPTION

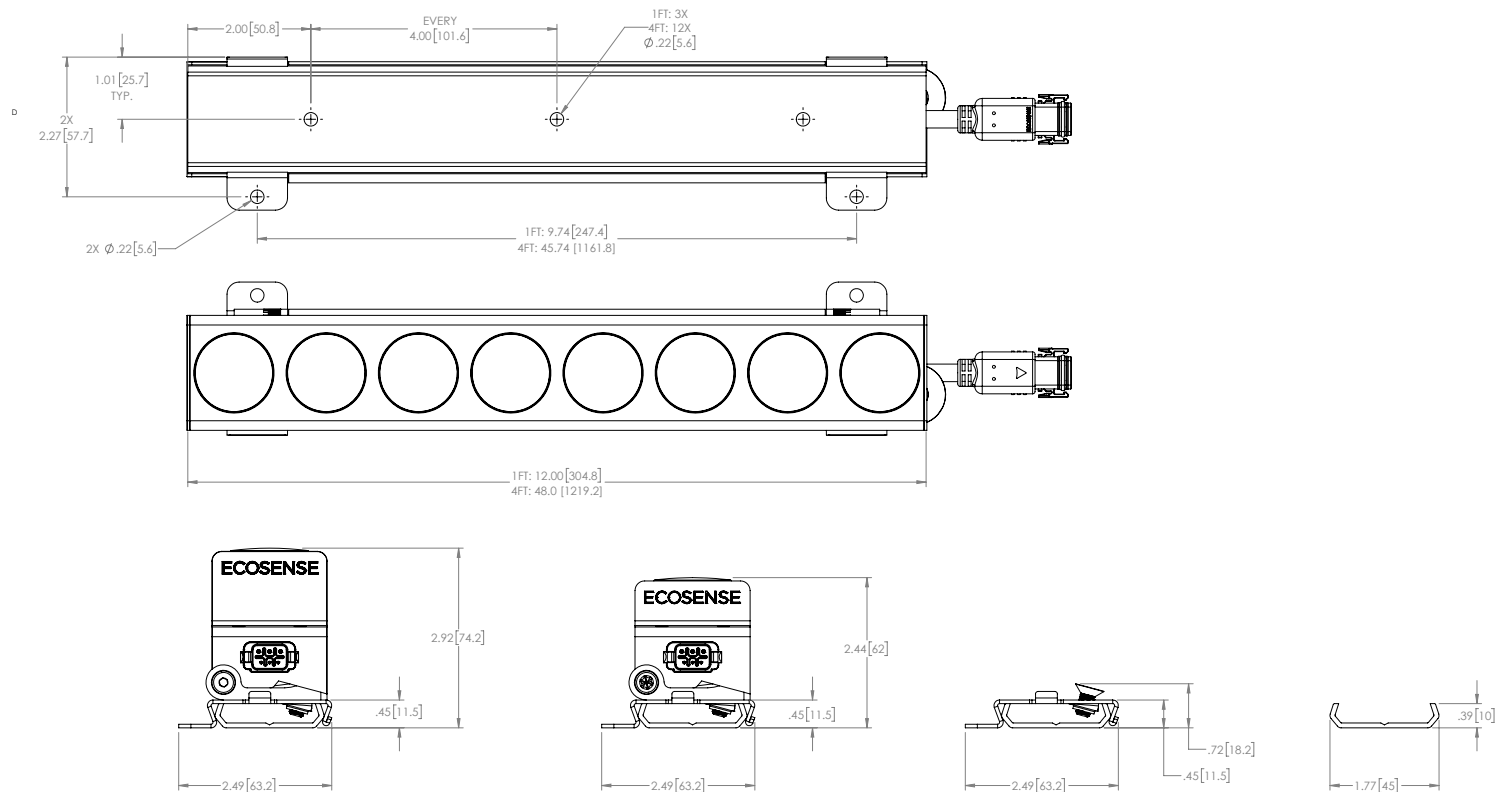
TROV L45 L60, Mounting Track, 12in, White
 TROV L45 L60, Mounting Track, 48in, White
 TROV L45 L60, Mounting Track, 12in, Black
 TROV L45 L60, Mounting Track, 48in, Black
 TROV L45 L60, Track, KEC, and Masking Plate Mounting Clip, Set of 2, (1 Set per Fixture)

NOTES: *Silver, bronze, and custom finishes are build-to-order. Longer lead times and increased pricing apply.

- One set of clips are needed for each 12in and 48in fixture.
- Using #10 hardware to secure the clips is highly recommended in high vibration areas and are required for vertical installations.

DATE	PROJECT	FIRM	TYPE
------	---------	------	------

L45 AND L60 WITH MOUNTING TRACK AND CLIPS



L60 WITH MOUNTING TRACK AND CLIPS

L45 WITH MOUNTING TRACK AND CLIPS