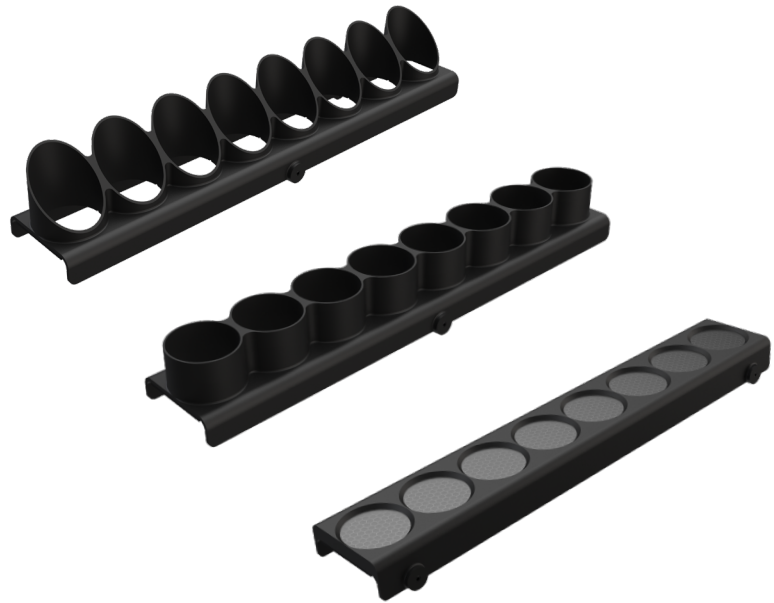


DATE	PROJECT	FIRM	TYPE
------	---------	------	------

TROV L45 AND L60 LOUVERS COME IN FULL, HALF, AND HONEYCOMB GLARE PROTECTION. THEY ARE MADE FROM UV STABILIZED POLYCARBONATE FOR LONG LASTING OUTDOOR USE. FULL AND HALF LOUVERS HAVE AN INTEGRATED WEEP HOLE DRAINING SYSTEM TO ENSURE NO WATER BUILD UP OCCURS IN UPLIGHTING APPLICATIONS. THE HONEYCOMB LOUVER HAS A CLEAR PROTECTIVE LENS TO PREVENT DIRT BUILD UP IN THE CELLS. LOUVERS ONLY COME IN 12IN LENGTHS. THE 48IN SKU INCLUDES FOUR 12IN LOUVERS. LOUVERS ATTACH TO THE FIXTURE WITH SET SCREWS AND GRAB THE SIDE OF THE HOUSING.

FEATURES:

- OUTDOOR RATED FOR IP66 APPLICATIONS
- INTEGRATED WEEP HOLE DRAIN SYSTEM
- METAL HONEYCOMB LOUVER TO REDUCE LIGHT LOSS
- UV STABILIZED POLYCARBONATE
- FOR USE WITH L45 AND L60
- HONEYCOMB LOUVER NOT FOR USE WITH L60 ASYM OPTIC

**L60 with Half Louver****L60 with Full Louver****L60 with Honeycomb Louver**

PHYSICAL	MATERIAL ENVIRONMENT	INJECTION MOLDED UV STABILIZED POLYCARBONATE, STAINLESS STEEL HARDWARE OUTDOOR IP66, WET LOCATION
-----------------	---------------------------------	--

LIMITED WARRANTY	5 YEARS
-------------------------	----------------

PART NUMBER

L45L60-A-LV-HL-12
L45L60-A-LV-HL-48
L45L60-A-LV-FL-12
L45L60-A-LV-FL-48
L45L60-A-LV-HCOMB-12
L45L60-A-LV-HCOMB-48

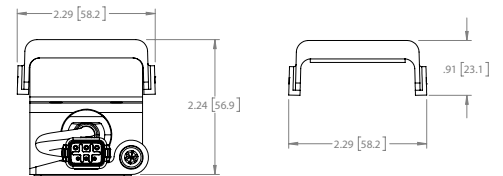
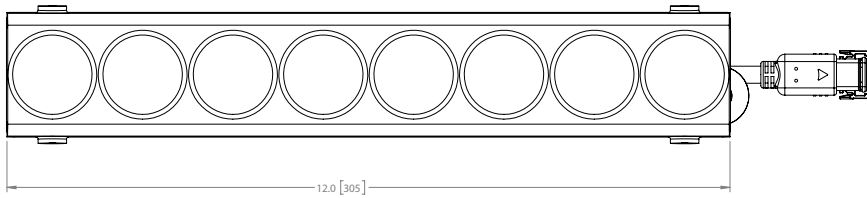
DESCRIPTION

TROV L45 L60, Half Louver, Black, 12in
TROV L45 L60, Half Louver, Black, 4x12in
TROV L45 L60, Full Louver, Black, 12in
TROV L45 L60, Full Louver, Black, 4x12in
TROV L45 L60, Honeycomb Louver, Black, 12in
TROV L45 L60, Honeycomb Louver, Black, 4x12in

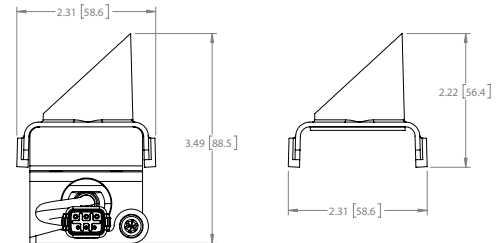
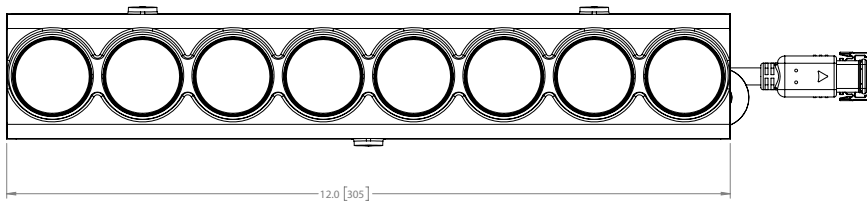
NOTES: LOUVERS ONLY COME IN 12IN LENGTHS. 48IN SKUS COME WITH 4X12IN LOUVERS. HONEYCOMB LOUVERS WILL NOT WORK WITH L60 ASYM OPTICS.

DATE	PROJECT	FIRM	TYPE
------	---------	------	------

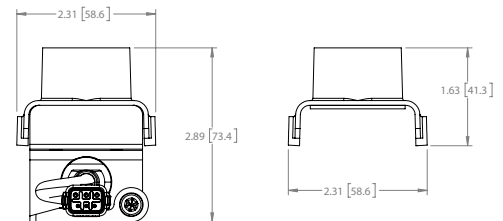
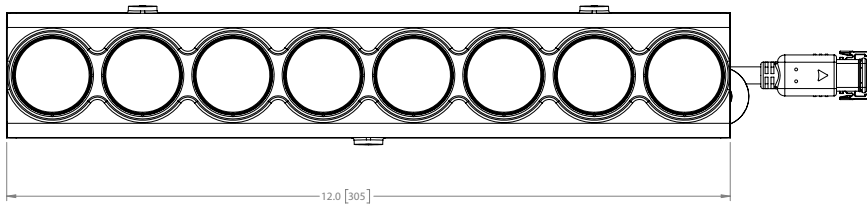
L45 HONEYCOMB LOUVER



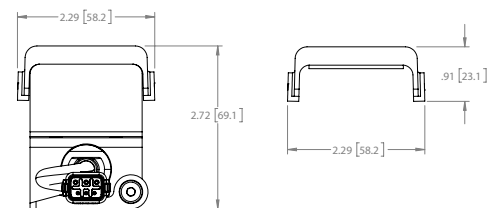
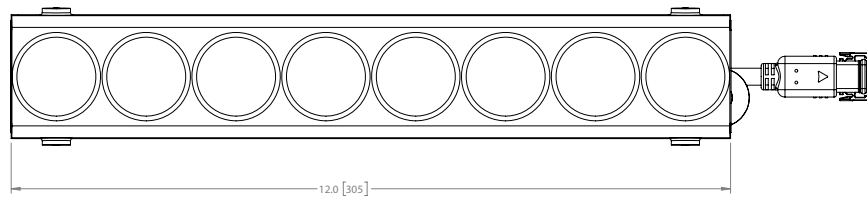
L45 HALF LOUVER



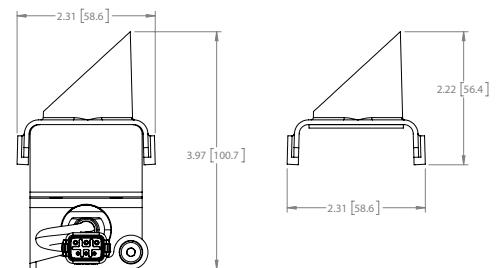
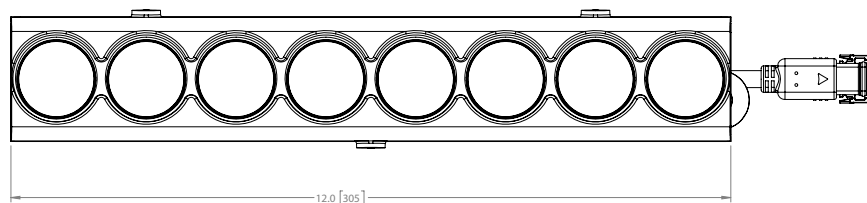
L45 FULL LOUVER



L60 HONEYCOMB



L60 HALF LOUVER



L60 FULL LOUVER

