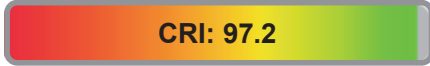


Light efficiency:



Light quality:



Color temperature:



Output: 1295 lm

Peak: 5661 cd

Power: 18.2 W

PF: 0.89



Product name:

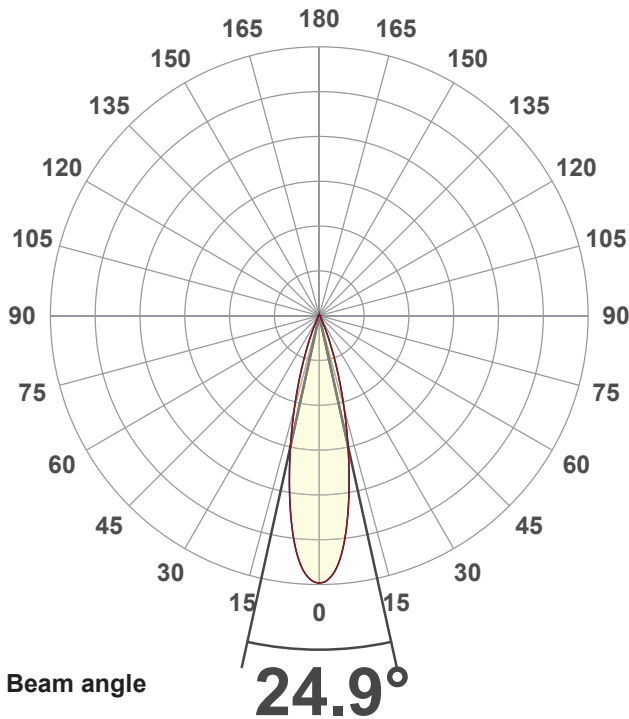
**SORAA VIVID PAR30S**

Item number:

**SP30SW-18-25D-940-03-S3**

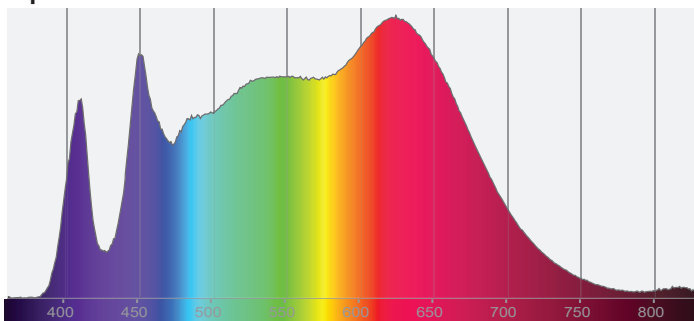
Date and time:

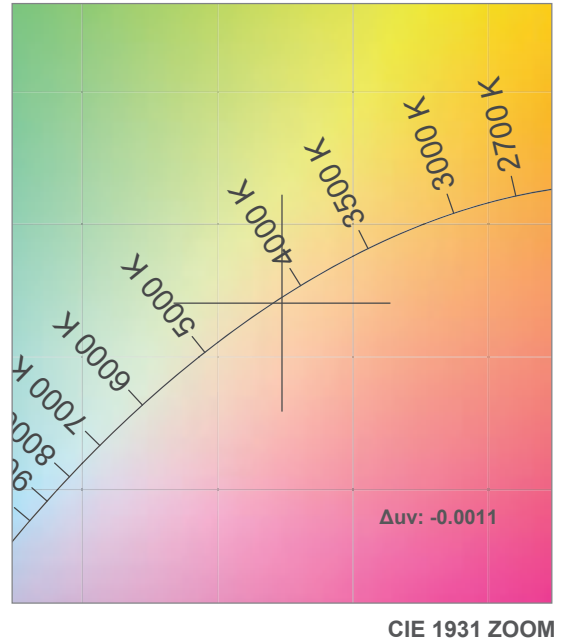
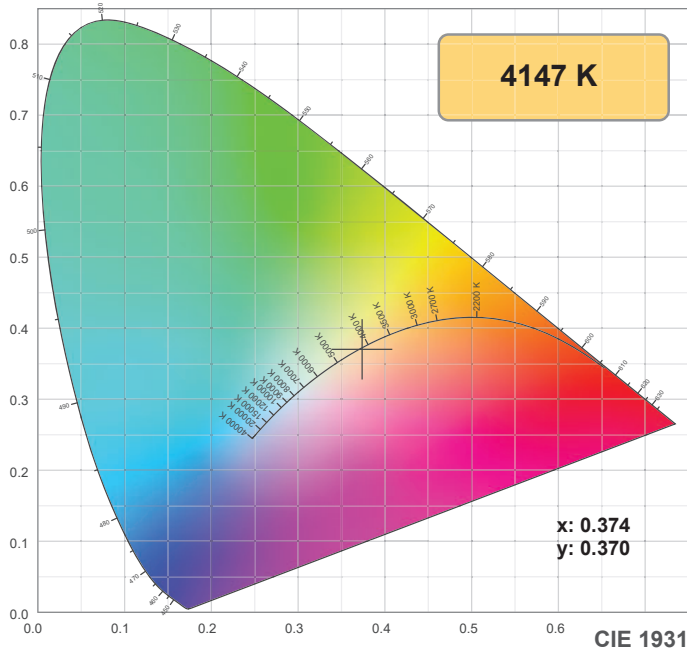
**5/4/2021 2:37:36 PM**



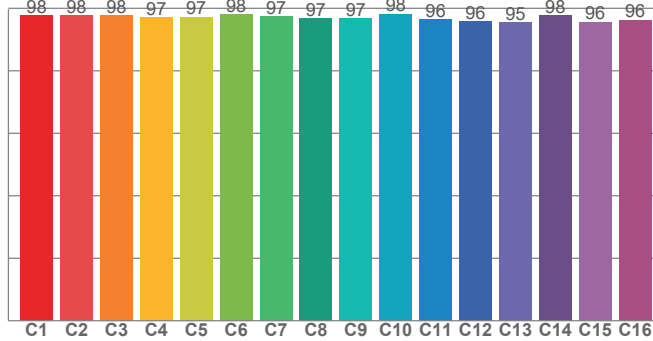
CIE 1931  
x: 0.374  
y: 0.370

Spectra

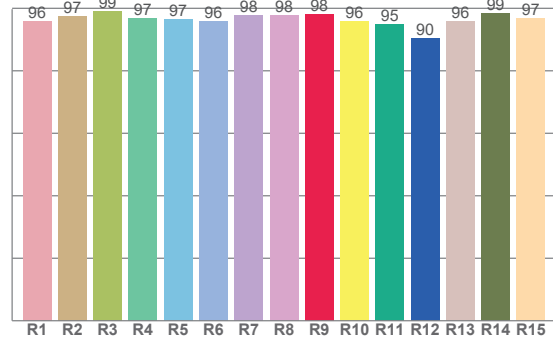




**TM30: 97.1**



**CRI: 97.2 (R1-R8)**



**CRI R values, only R1-R8 are used to calculate final CRI value**

R1	R2	R3	R4	R5	R6	R7	R8	R9	R10	R11	R12	R13	R14	R15
96.0	97.4	99.1	96.9	96.6	95.8	97.9	97.9	98.0	95.9	95.1	90.3	96.0	98.6	96.7

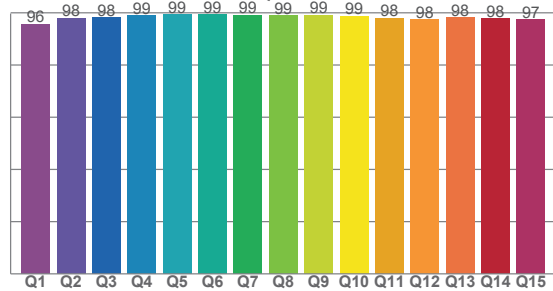
**TM30 C values, 16 binned values out of total of 99 C values**

C1	C2	C3	C4	C5	C6	C7	C8	C9	C10	C11	C12	C13	C14	C15	C16
97.8	97.8	97.6	97.1	97.3	98.1	97.3	96.8	96.8	98.2	96.5	95.7	95.4	97.8	95.6	96.3

**CQS Q values**

Q1	Q2	Q3	Q4	Q5	Q6	Q7	Q8	Q9	Q10	Q11	Q12	Q13	Q14	Q15
95.8	97.9	98.2	98.9	99.4	99.3	99.1	98.9	99.1	98.8	98.0	97.5	98.3	97.9	97.3

**CQS: 98.1**



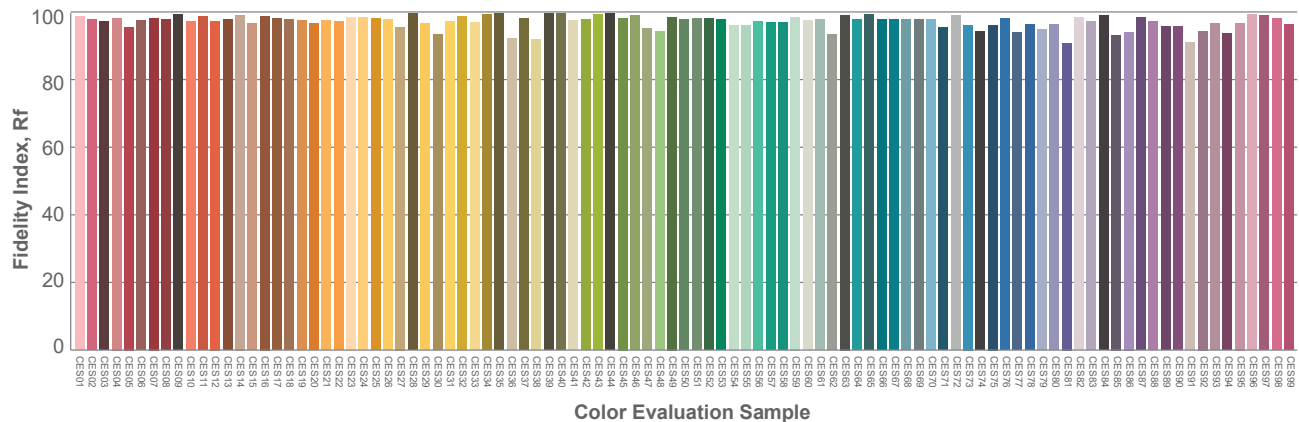
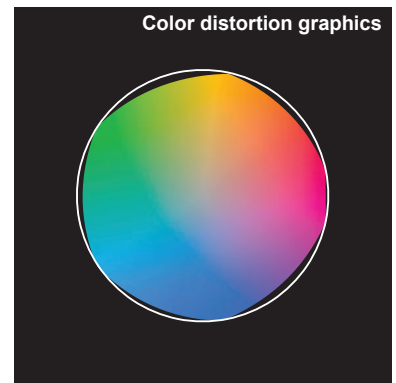
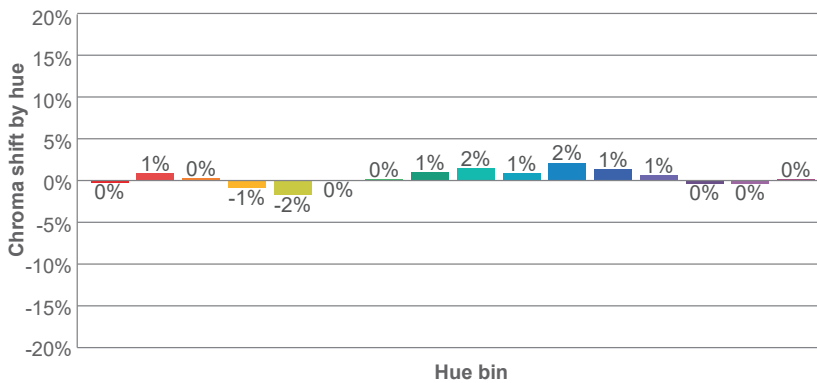
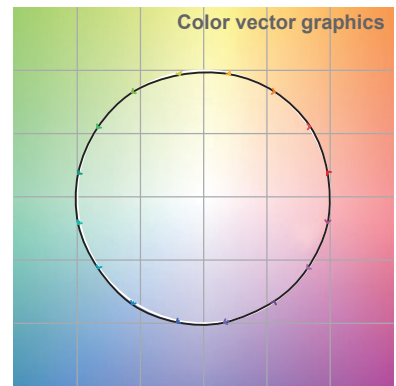
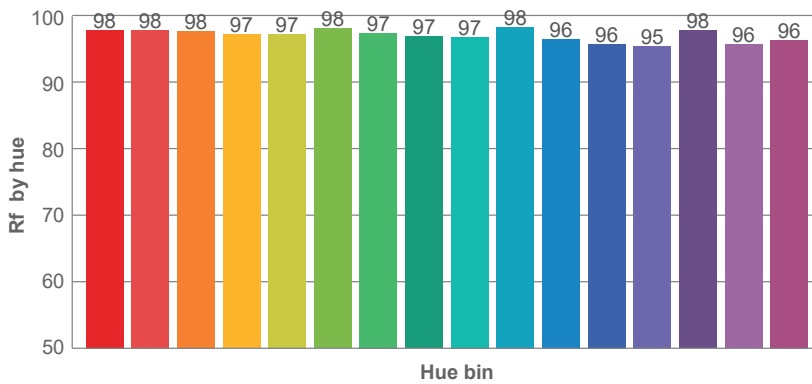
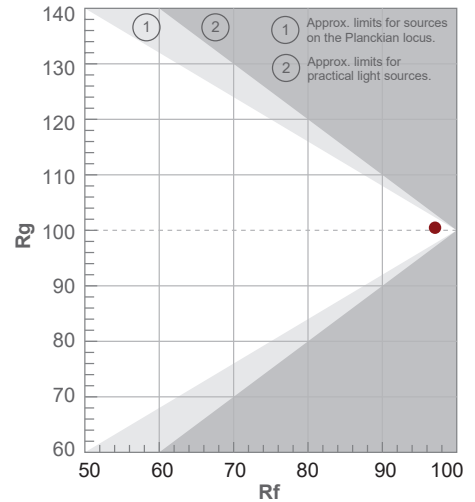
**Color parameters**

Color temperature	Color rendering index	Red component	Color fidelity	Color gamut	Color quality scale	Color coordinate cie 1931	Color coordinate cie 1931	Color coordinate	Color coordinate	Color deviation from black body
CCT	CRI	CRI R9	TM30 Rf	TM30 Rg	CQS	x	y	u	v	Δuv
4147 K	97.2	98.0	97.1	100.5	98.1	0.374	0.370	0.223	0.332	-0.0011

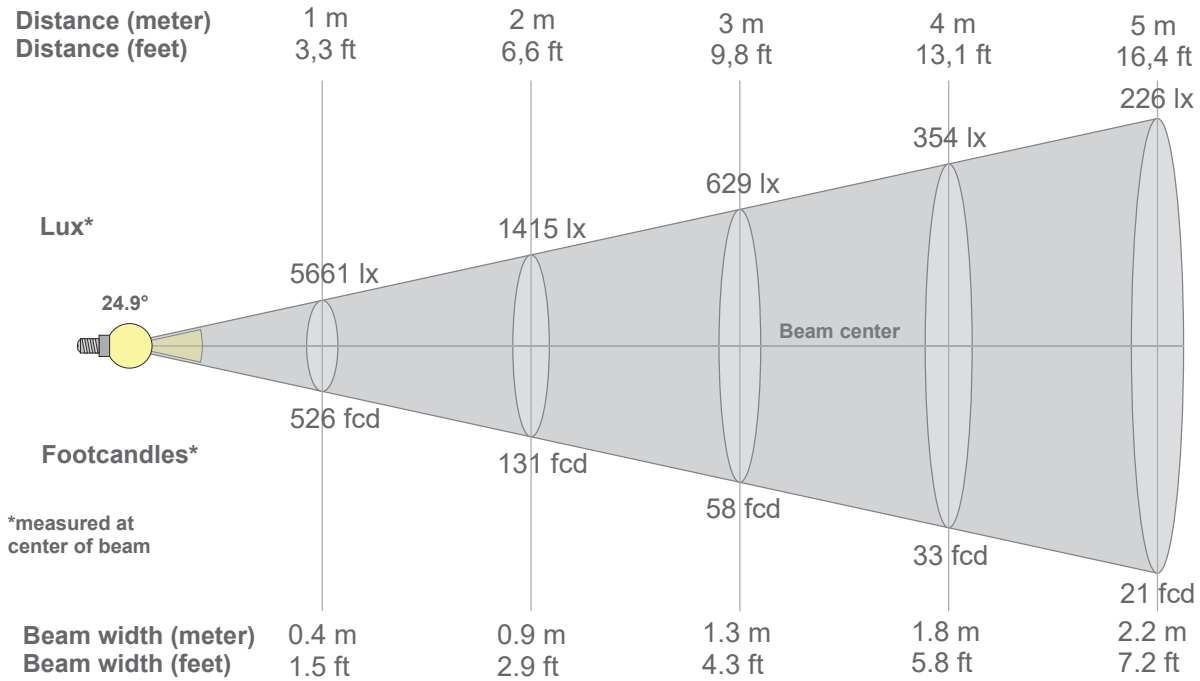
**Rf 97.1**  
Fidelity index Rf

**Rg 100.5**  
Gammut index Rg

Hue Bin	R <sub>f</sub>	Graphic shifts (%)	
		Chroma	Hue
1	98	0%	1%
2	98	1%	0%
3	98	0%	-1%
4	97	-1%	-1%
5	97	-2%	0%
6	98	0%	1%
7	97	0%	1%
8	97	1%	2%
9	97	2%	2%
10	98	1%	1%
11	96	2%	0%
12	96	1%	-2%
13	95	1%	-4%
14	98	0%	0%
15	96	0%	-2%
16	96	0%	-1%



Beam details



Beam intensities from 1-20m

1m	2m	3m	4m	5m	6m	7m	8m	9m	10m	11m	12m	13m	14m	15m	16m	17m	18m	19m	20m
3.3ft	6.6ft	9.8ft	13.1ft	16.4ft	19.7ft	23ft	26.2ft	29.5ft	32.8ft	36.1ft	39.4ft	42.7ft	45.9ft	49.2ft	52.5ft	55.8ft	59.1ft	62.3ft	65.6ft
5661lx	1415lx	629lx	354lx	226lx	157lx	116lx	88lx	70lx	57lx	47lx	39lx	33lx	29lx	25lx	22lx	20lx	17lx	16lx	14lx
525.9fcd	131.5fcd	58.4fcd	32.9fcd	21fcd	14.6fcd	10.7fcd	8.2fcd	6.5fcd	5.3fcd	4.3fcd	3.7fcd	3.1fcd	2.7fcd	2.3fcd	2.1fcd	1.8fcd	1.6fcd	1.5fcd	1.3fcd

Intensities in 0° c-plane

0°	2°	4°	6°	8°	10°	12°	14°	16°	18°	20°	22°	24°	26°	28°	30°	32°	34°	36°	38°
5661	5585	5341	4903	4309	3641	2971	2340	1770	1277	872	567	357	226	154	112	86	70	61	56
100%	99%	94%	87%	76%	64%	52%	41%	31%	23%	15%	10%	6%	4%	3%	2%	2%	1%	1%	1%

Intensities in 90° c-plane

0°	2°	4°	6°	8°	10°	12°	14°	16°	18°	20°	22°	24°	26°	28°	30°	32°	34°	36°	38°
5661	5585	5341	4903	4309	3641	2971	2340	1770	1277	872	567	357	226	154	112	86	70	61	56
100%	99%	94%	87%	76%	64%	52%	41%	31%	23%	15%	10%	6%	4%	3%	2%	2%	1%	1%	1%

Intensities in 180° c-plane

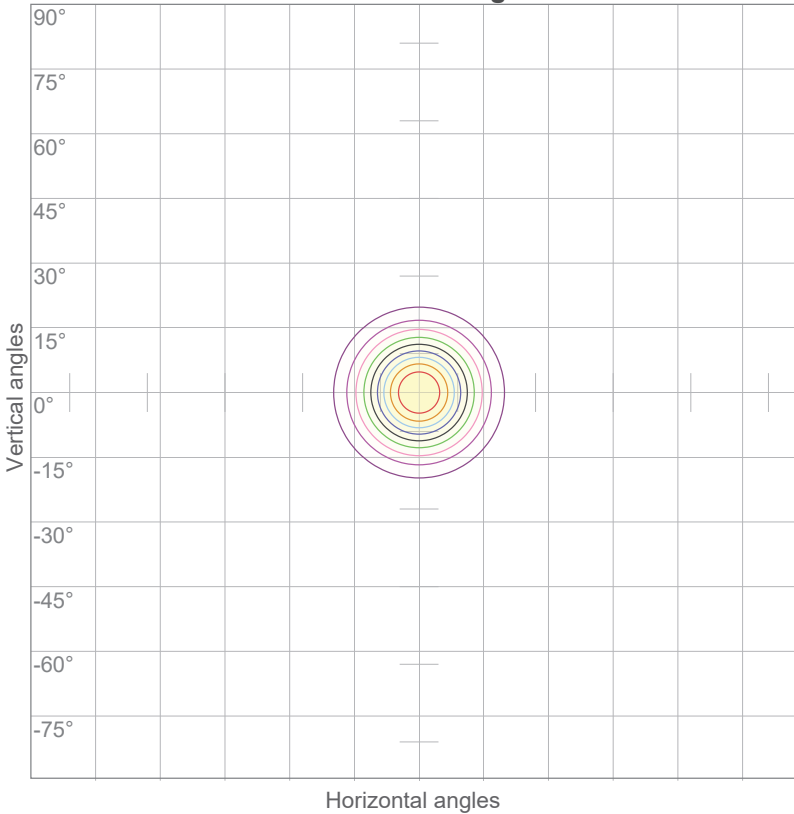
0°	2°	4°	6°	8°	10°	12°	14°	16°	18°	20°	22°	24°	26°	28°	30°	32°	34°	36°	38°
5661	5585	5341	4903	4309	3641	2971	2340	1770	1277	872	567	357	226	154	112	86	70	61	56
100%	99%	94%	87%	76%	64%	52%	41%	31%	23%	15%	10%	6%	4%	3%	2%	2%	1%	1%	1%

Intensities in 270° c-plane

0°	2°	4°	6°	8°	10°	12°	14°	16°	18°	20°	22°	24°	26°	28°	30°	32°	34°	36°	38°
5661	5585	5341	4903	4309	3641	2971	2340	1770	1277	872	567	357	226	154	112	86	70	61	56
100%	99%	94%	87%	76%	64%	52%	41%	31%	23%	15%	10%	6%	4%	3%	2%	2%	1%	1%	1%

Beam angle 50%	Field angle 10%	Cutoff angle 2,5%	Intensity ratio in 120° cone	Intensity ratio in 90° cone
24.9°	44°	57°	97.3%	93.7%

ISO candela diagram

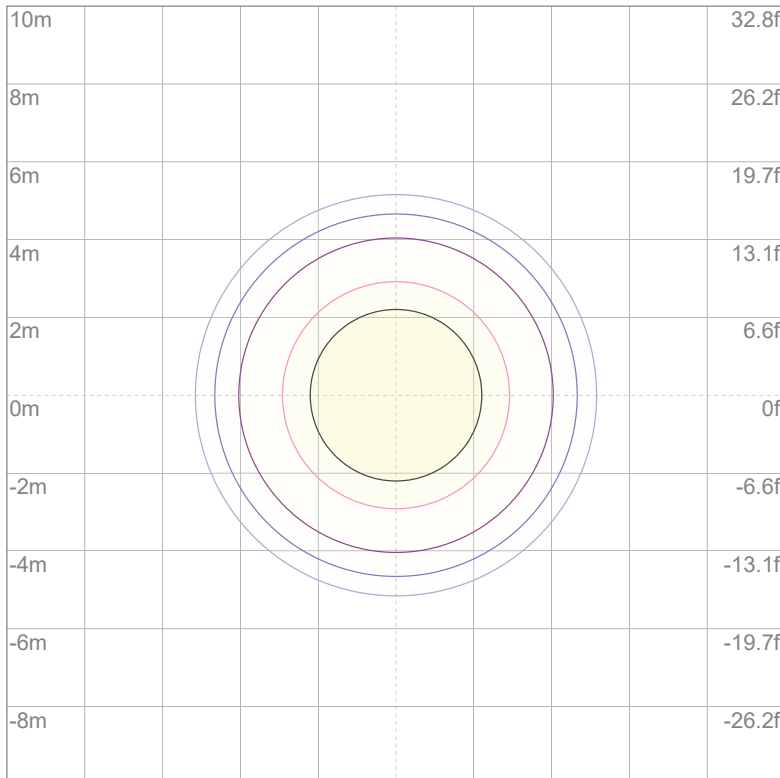


- 10% 566 cd
- 20% 1132 cd
- 30% 1698 cd
- 40% 2264 cd
- 50% 2830 cd
- 60% 3396 cd
- 70% 3962 cd
- 80% 4529 cd
- 90% 5095 cd

Conditions:

Number of c-planes: 16  
Candela at center: 5661 cd

ISO lux diagram



- 3% 1.70 lx
- 5% 2.83 lx
- 10% 5.66 lx
- 30% 17.0 lx
- 50% 28.3 lx

Conditions:

Number of c-planes: 16  
Lux at center: 56.6 lx

*Lux distribution on a surface when lamp is mounted at 10 meters from the surface.*