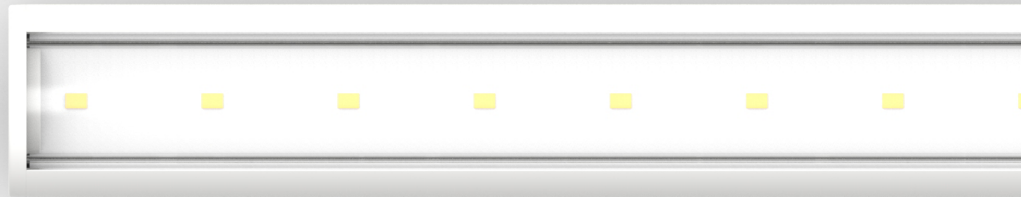


ECOSENSE® | SLIM COVE DIM



FULLY LOADED

Engineered to attain unrivaled all-around performance, Slim Cove™ Dim is a feature-rich solution that just happens to come in an elegantly affordable platform.

Low Profile, High Lumens

Smallest line voltage at 400 and 800 lumens per foot

High Efficacy

Delivering up to 123 lumens per watt

Flicker-Free Dimming

Reverse phase technology

Multi-Volt

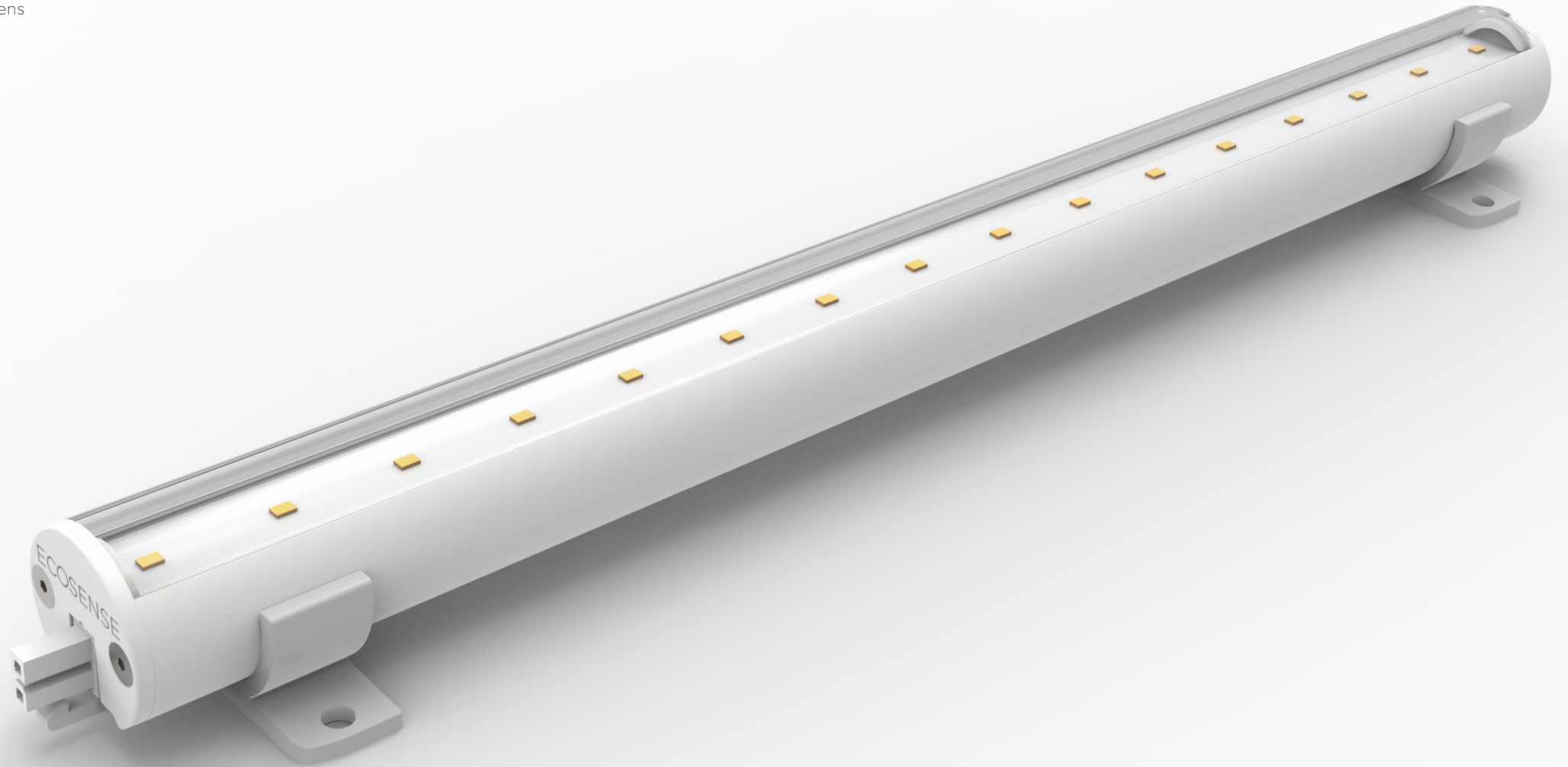
One size fits all (120-277VAC)

Single Bin LED Capability

For consistent, uniform lighting every single time

Delivered On Demand

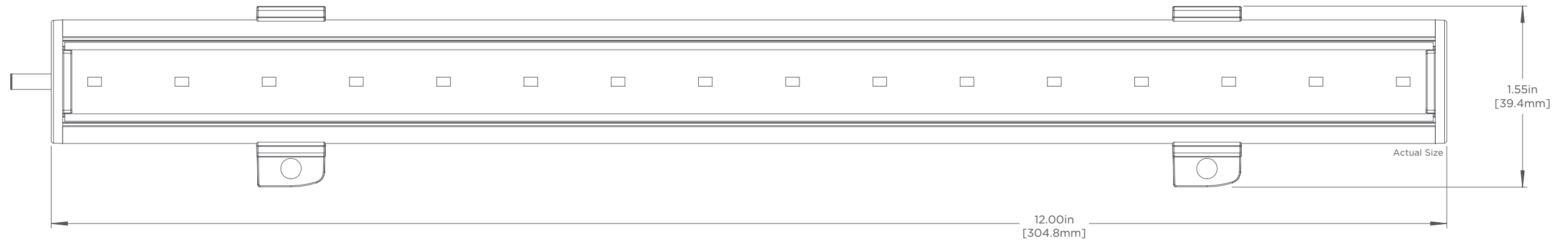
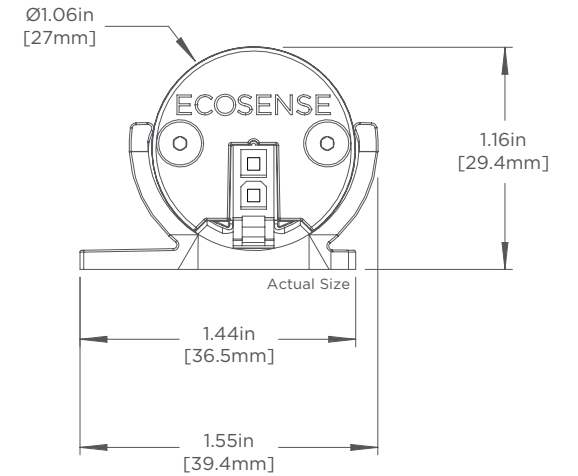
2 week delivery times



SO SMALL BUT SO MIGHTY

Who knew that something so small could pack such a big punch? Slim Cove™ Dim fits easily into any space or budget.

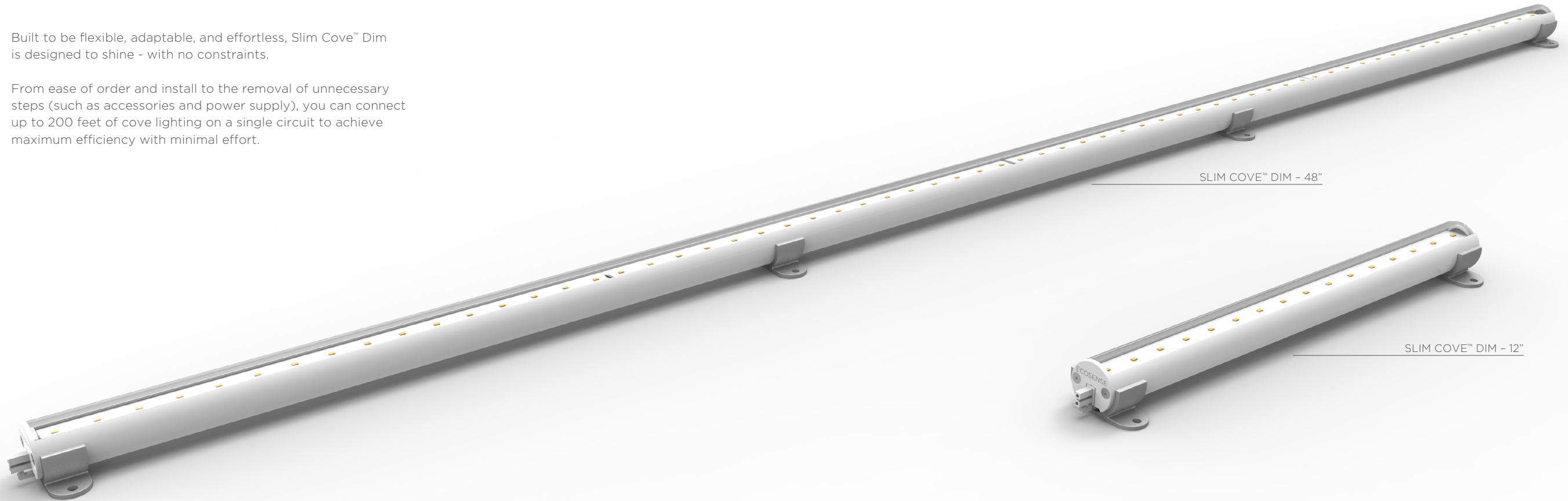
We squeezed the most into it and out of it so designers can create freely with high quality light - and zero trade-offs.



DO MORE WITH LESS

Built to be flexible, adaptable, and effortless, Slim Cove™ Dim is designed to shine - with no constraints.

From ease of order and install to the removal of unnecessary steps (such as accessories and power supply), you can connect up to 200 feet of cove lighting on a single circuit to achieve maximum efficiency with minimal effort.

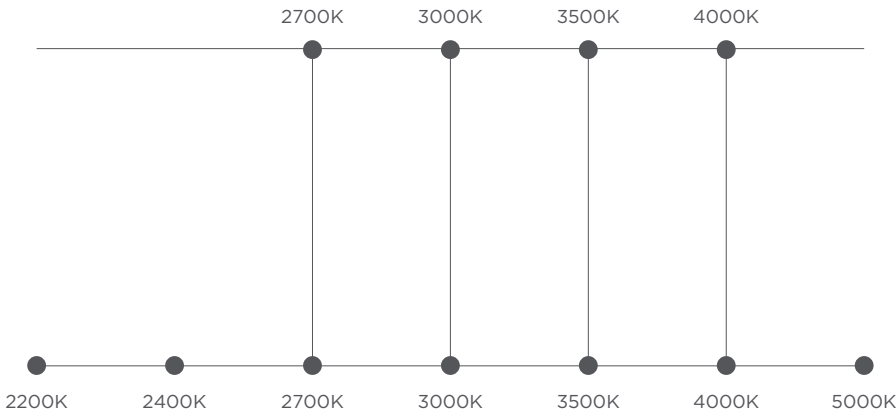
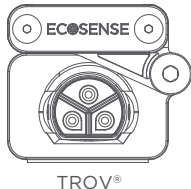
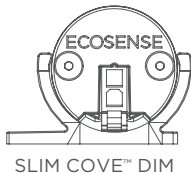


CONSISTENT & COMPATIBLE

Our single bin LED platform delivers consistent, uniform lighting every single time, ensuring that Slim Cove™ Dim's color matches perfectly with other EcoSense products – from fixture to fixture.

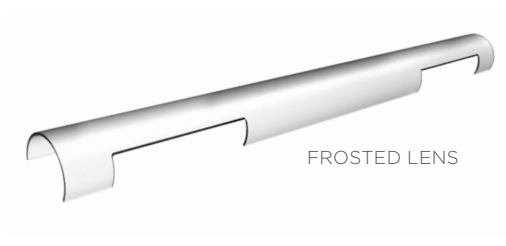
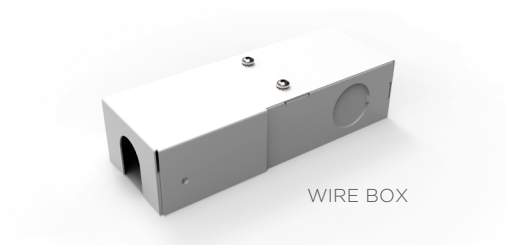
And Slim Cove™ Dim also pairs perfectly with other EcoSense products for seamless integration and full control.

CORRELATED COLOR TEMPERATURES (CCTs)



CREATE & CUSTOMIZE

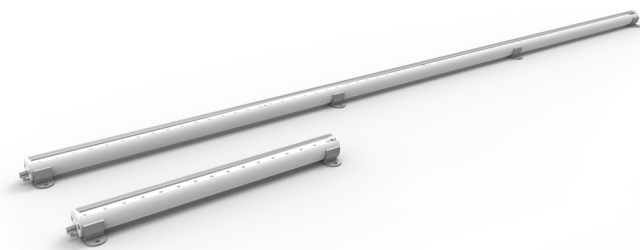
Our thoughtfully-designed accessories expedite on-the-fly adjustments across any application.



SLIM COVE™ DIM

SLIM COVE™ DIM IS THE SMALLEST, LINE-VOLTAGE, 400 AND 800 LUMEN/FOOT, LUMINAIRE ON THE MARKET. SINGLE BINNING DELIVERS SUPERIOR COLOR QUALITY AND COLOR CONSISTENCY BETWEEN ALL ECOSENSE PRODUCTS.

- DIM TO 10%, ELV REVERSE PHASE
- ULTRA LOW PROFILE
- UP TO 123 lm/W
- MULTI-VOLT 120-277VAC
- SINGLE BIN COLOR MATCHES TROV®
- 4 CCT OPTIONS
- 80+ CRI



ORDERING GUIDE	MODEL	POWER	LENGTH	CCT	VOLTAGE
	SCD	M - Medium Output H - High Output	12 - 12" 48 - 48"	27 - 2700K 30 - 3000K 35 - 3500K 40 - 4000K	MULT - (120-277VAC)
ORDERING EXAMPLE: SCD-H-12-40-MULT					

PERFORMANCE @ 3000K	POWER	WATTS	OPTIC	LUMEN OUTPUT	EFFICACY
	M	4W	120°	470 lm/ft (1542 lm/m)	118 lm/W
	H	8W	120°	800 lm/ft (2625 lm/m)	100 lm/W

ELECTRICAL	POWER CONSUMPTION	4W (Medium Output): 4W/ft (13.2W/m) 8W (High Output): 8W/ft (26W/M)
	MAX FIXTURE RUN LENGTH	4W (Medium Output): 120V = 90ft (27.4m) ; 220V = 170ft (51.8m) ; 277V = 200ft (60.9m) 8W (High Output): 120V = 65ft (19.8m) ; 220V = 125ft (38.1m) ; 277V = 150ft (45.7m)
	POWER FACTOR	4W (Medium Output): 120VAC > 0.85, 230VAC > 0.80, 277VAC > 0.75 8W (High Output): 120VAC > 0.85, 230VAC > 0.85, 277VAC > 0.85
	OPERATING VOLTAGE DRIVER	120-277VAC, 50/60 Hz INTEGRAL TO FIXTURE ; DE-RATED

CONTROL	DIMMING	ELV TYPE 10%-100%, REVERSE PHASE, TRAILING EDGE
---------	---------	---

PHYSICAL	DIMENSIONS	W 1.55" x H 1.16" x L 12"/48" ; (39.4mm x 29.4mm x 304.7mm/1201mm)
	HOUSING/LENS	EXTRUDED POLYCARBONATE HOUSING AND LENS
	WEIGHT	0.313lbs / 0.141kg (1ft) / 1.113lbs / 0.504kg (4ft)
	CONNECTORS	INTEGRAL MALE / FEMALE CONNECTORS
	ENVIRONMENT	INDOOR • ETL CERTIFIED FOR DRY/DAMP LOCATIONS IP40, IMPACT RATED AT IK07

FIXTURE RATING & CERTIFICATIONS

CE, ETL CERTIFIED
ROHS COMPLIANT
ENERGY STAR COMPLIANT



IP40

IK07

EcoSense Lighting Inc.
837 North Spring Street
Suite 103
Los Angeles, CA 90012

Phone +1.310.496.6255
Fax +1.310.496.6256

©2017 EcoSense Lighting Inc.
EcoSense, the EcoSense logo, SLIM COVE and TROV are registered trademarks of EcoSense Lighting Inc.

ecosenselighting.com