

RISE®

ECOSENSE®

ECOSENSE | 837 NORTH SPRING STREET, LOS ANGELES, CA 90012

**Introducing the smallest  
and brightest LED lighting  
system of it's kind;  
Rise is now Marine-Grade  
Certified.\***

**No corrosion for the life  
of the fixture.**

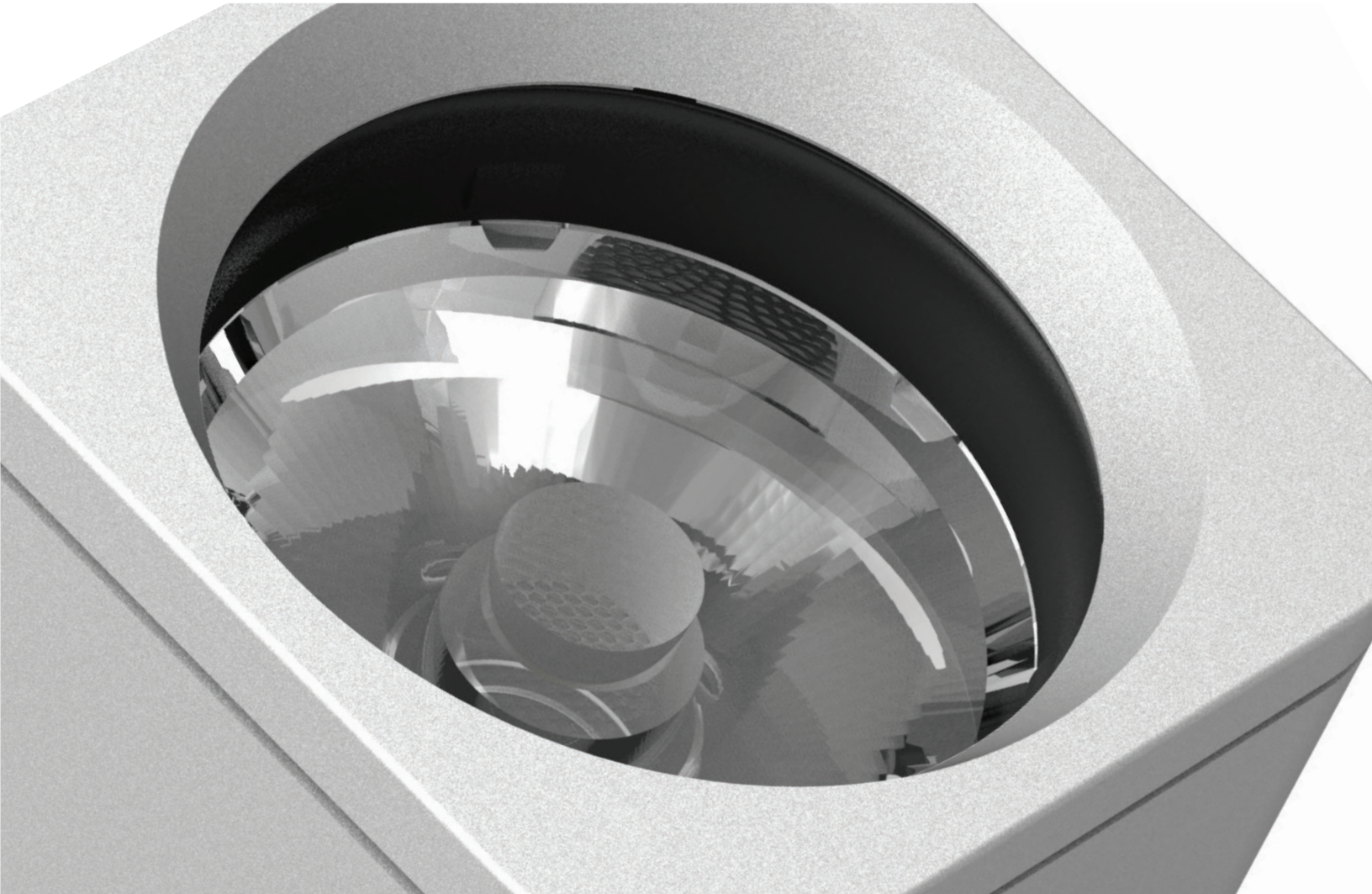
\*Available only for RISE F080.



**Regardless of weather or geography, RISE stands alone  
as the most powerful, resilient floodlight.**

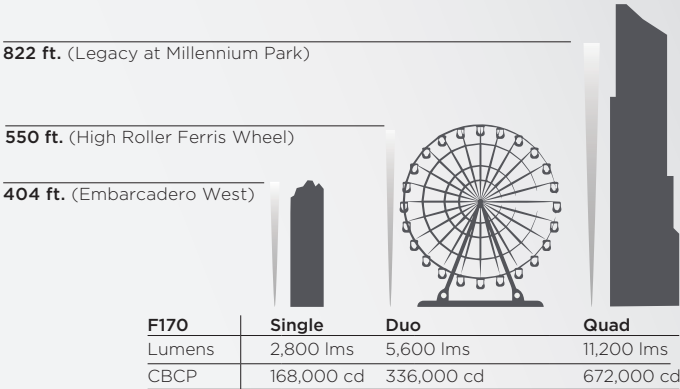
**2x Center Beam Candlepower**  
That's 2x more power than the average floodlight.





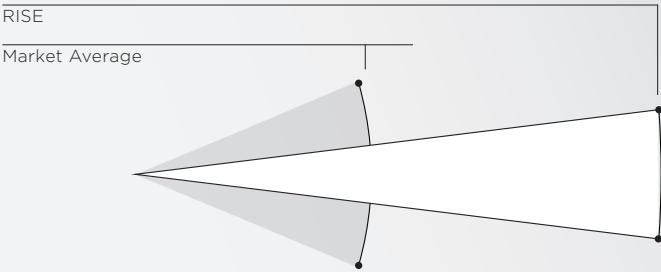
### Focused Power

With the strongest CBCP, Rise is 2X more powerful than the market average.

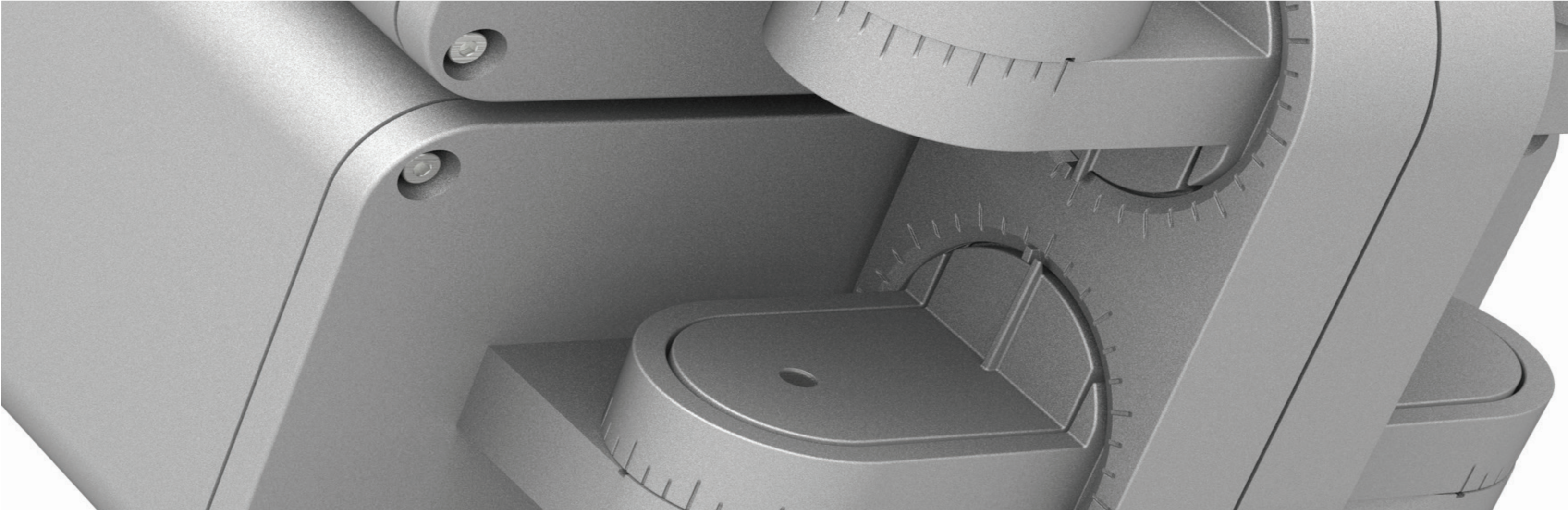


### Intense 5° Beam Angle

With the strongest CBCP, Rise is 2X more powerful than the market average.



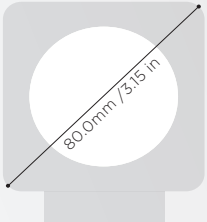




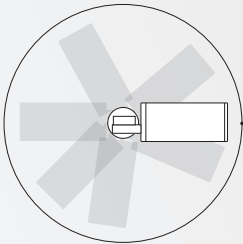
Flexible And Compact

RISE is the world’s most compact floodlight with the exclusive Macro Lock™ for easy one-touch aiming, and ultimate flexibility.

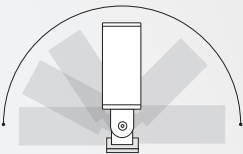
63.5MM / 2.5IN X 63.5MM / 2.5 IN



360° PAN



180° TILT







RISE F080

Thoughtfully designed from the ground up, RISE F080 is an ultra-compact, exterior-rated LED luminaire. Delivering up to 700 lumens in a variety of beam angles, RISE F080 is ideal for spot, accent, landscape and floodlight applications.

F080		Low	Medium	High
	LUMENS	300 lms	500 lms	700 lms
	CBCP	18,000 cd	30,000 cd	42,000 cd



F080 Bracket System

F080 DUO-H		Low	Medium	High
	LUMENS	600 lms	1000 lms	1400 lms
	CBCP	36,000 cd	60,000 cd	84,000 cd



F080 DUO-V		Low	Medium	High
	LUMENS	600 lms	1000 lms	1400 lms
	CBCP	36,000 cd	60,000 cd	84,000 cd



F080 QUAD		Low	Medium	High
	LUMENS	1200 lms	2000 lms	2800 lms
	CBCP	72,000 cd	120,000 cd	168,000 cd





RISE F170

For more punch, RISE F170 is a powerful and compact exterior-rated LED luminaire, delivering up to 2800 lumens. With the most extensive collection of beam angles, this luminaire can be used for spot, accent, landscape and floodlight applications.

F170	Low	Medium	High
LUMENS	1200 lms	2000 lms	2800 lms
CBCP	72,000 cd	120,000 cd	168,000 cd



F170 Bracket System

F170 DUO-H	Low	Medium	High
LUMENS	2400 lms	4000 lms	5600 lms
CBCP	144,000 cd	240,000 cd	336,000 cd



F170 DUO-V	Low	Medium	High
LUMENS	2400 lms	4000 lms	5600 lms
CBCP	144,000 cd	240,000 cd	336,000 cd



F170 QUAD	Low	Medium	High
LUMENS	4800 lms	8000 lms	11,200 lms
CBCP	288,000 cd	480,000 cd	672,000 cd







### RISE F380

RISE is uniquely designed for scalability and configurability. This unique fixture can be used to powerfully light one single object or aimed separately, allowing you to illuminate multiple applications. RISE F380 is a unique configuration that groups four (4) RISE F080 Single fixtures and one (1) F170 Single fixture allowing you to illuminate the most challenging applications.

F380		Low	Medium	High
	LUMENS	2400 lms	4000 lms	5600 lms
	CBCP	144,000 cd	240,000 cd	336,000 cd



F380		Low	Medium	High
	LUMENS	2400 lms	4000 lms	5600 lms
	CBCP	144,000 cd	240,000 cd	336,000 cd

