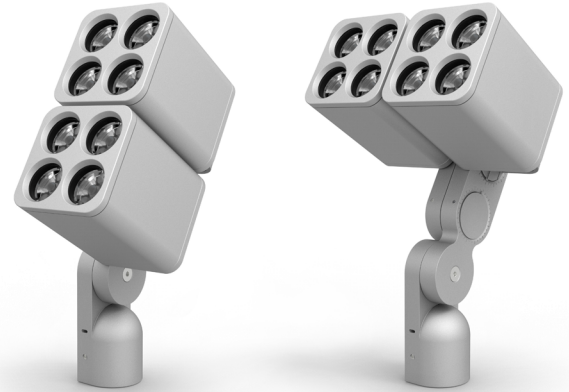


DATE	PROJECT	FIRM	TYPE
------	---------	------	------

RISE IS A SYSTEM OF BEAUTIFULLY DESIGNED OUTDOOR RATED LUMINAIRES THAT PROVIDE EFFICIENT AND POWERFUL LIGHT USING THE LATEST IN LED TECHNOLOGY. RISE F170 DUO IS A UNIQUE CONFIGURATION THAT PAIRS UP TWO RISE F170 SINGLES ALLOWING YOU TO DOUBLE YOUR LUMEN POWER, DELIVERING UP TO 8900 LUMENS. THIS UNIQUE FIXTURE CAN BE USED TO POWERFULLY LIGHT ONE OBJECT OR AIMED SEPARATELY, ALLOWING YOU TO ILLUMINATE MULTIPLE APPLICATIONS. THIS POWERFUL AND COMPACT LED LIGHT FIXTURE CAN BE USED IN SPOT, ACCENT, LANDSCAPE, ARCHITECTURAL, AND FLOODLIGHT APPLICATIONS. ITS UNIQUE MACRO™ LOCK FEATURE ALLOWS FOR FULL 180 DEGREE TILT AND 360 DEGREE PAN AIMABILITY OF EACH FIXTURE HEAD USING ONLY ONE TOOL.

**FEATURES :**

- POWERFUL CBCP
- EXTREMELY COMPACT
- POWERFUL OUTPUT UP TO 8900 LUMENS
- MACRO™ LOCK - 180° TILT AND 360° PAN
- 12 UNIQUE BEAM ANGLES
- MULTIVOLT (110V-277 V)
- 8 CCTS: 2200 K THROUGH 6500 K
- 80+ AND 90+ CRI
- DIMMABLE TO 5%
- IP66 RATED



FIXTURE MODEL	FIXTURE CONFIG.	POWER/LUMEN OUTPUT*	CCT/COLOR	CRI	BEAM ANGLE	FINISHES	ACCESSORIES	WIRING AND MOUNTING
F170	2V - 2 Heads, Vertical Orientation  2H - 2 Heads, Horizontal Orientation	LO - Low Output  MO - Medium Output  HO - High Output	22 - 2200K 25 - 2500K 27 - 2700K 30 - 3000K 35 - 3500K 40 - 4000K 50 - 5000K 65 - 6500K RD - Red GR - Green BL - Blue AM - Amber  *2200K and 2500K not available in 40°, 60°, 70° and 90°	8 - 80 9 - 90* X - For RD, GR, BL, AM  *90 CRI not available in 2200K, 2500K, 5000K, and 6500K	05 - Laser Spot (5°) 10 - Very Narrow Spot (10°) 15 - Narrow Spot (15°) 20 - Spot (20°) 40 - Flood (40°) 60 - Medium Flood (60°) 70 - Wide Flood (70°) 90 - Very Wide Flood (90°) E1 - Elliptical 1 (15°x60°) E2 - Elliptical 2 (30°x60°) E3 - Elliptical 3 (60°x15°) E4 - Elliptical 4 (60°x30°)	K - Black Z - Bronze S - Silver W - White C - Custom*  *Provide RAL #	X - No Accessory H - Half Snoot F - Full Snoot	C - 10' Exterior Rated Cable, Bottom Exit, 2-3/8" Tenon Mount; UL Listed  E* - 10' Exterior Rated Cable, Bottom Exit, 2-3/8" Tenon Mount; CE Listed

\*SEE PHOTOMETARY CHART FOR LUMEN DATA

PERFORMANCE	WATTS	POWER	LUMEN OUTPUT		EFFICACY		CBCP	
			5°	40°	5°	40°	5°	40°
	26	Low Output	2,515	3,266	97	126	144,975	5,722
	52	Medium Output	4,462	5,910	82	114	245,682	10,354
	78	High Output	5,756	8,700	74	112	331,782	15,241

ALL LUMEN DATA IS FROM 4000K 80CRI FIXTURES. PLEASE SEE PHOTOMETRY SPEC SHEET FOR ADDITIONAL LUMEN DATA.

**COLOR RENDERING INDEX  
COLOR CONSISTENCY**

80+, 90+  
3-STEP MACADAM ELLIPSE

**LUMEN DEPRECIATION**

WATTS | L70 @ 25C | L70 @ 50C | L90 @ 25C | L90 @ 50C

LOW	>60,500* >(109,000)**	>60,500* >(109,000)**	>60,500* >(109,000)**	>60,500* >(109,000)**
MEDIUM	>60,500* >(109,000)**	>60,500* >(109,000)**	>60,500* >(109,000)**	>60,500* >(109,000)**
HIGH	>60,500* >(181,000)**	>36,300* >(69,800)**	>60,500* >(69,800)**	>33,200*

\* ENERGY STAR REPORTED TESTING HOURS TO DATE. CALCULATIONS FOR LED FIXTURES ARE BASED ON MEASUREMENTS THAT COMPLY WITH IES LM-80 TESTING PROCEDURES AND IES TM-21 CALCULATOR  
\*\* ESTIMATED HOURS

NOTE: Information on this Spec Sheet is subject to change, please visit [ecosenselighting.com/downloads/raise](http://ecosenselighting.com/downloads/raise) for the most updated information.

DATE	PROJECT	FIRM	TYPE
<b>ELECTRICAL</b>	<b>WATTAGE</b> <b>POWER FACTOR</b> <b>THD</b> <b>OPERATING VOLTAGE</b> <b>DRIVER</b> <b>STARTUP TEMPERATURE</b> <b>OPERATING TEMPERATURE</b> <b>STORAGE TEMPERATURE</b> <b>SURGE PROTECTION</b>	LOW OUTPUT = 26 W; MEDIUM OUTPUT = 52 W; HIGH OUTPUT = 78 W >0.9 for 120 V (HO, MO, LO), 230 V (HO, MO), 277 V (HO) <0.2 for 120 V (HO, MO, LO), 230 V (HO, MO), 277 V (HO) MULTIVOLT: 110 V-277 VAC, 50/60 Hz INTEGRAL TO FIXTURE; DE-RATED POWER AND SYNCHRONOUS START-UP AT FULL BRIGHTNESS -40°F TO 122°F (-40°C TO 50°C) -40°F TO 122°F (-40°C TO 50°C) -40°F TO 176°F (-40°C TO 80°C) SURGE PROTECTION DEVICES WITH A MINIMUM DISCHARGE CURRENT RATING OF 20 kA, THAT MEET UL1449, CSA C22.2 No. 269.1, AND IEC TR 62066, SHOULD BE INSTALLED ON EACH BRANCH CIRCUIT.	
<b>CONTROL</b>	<b>DIMMING</b>	110-277VAC, ELV TYPE, REVERSE PHASE, TRAILING EDGE	
<b>PHYSICAL</b>	<b>DIMENSIONS</b> <b>HOUSING/LENS WEIGHT</b> <b>ENVIRONMENT</b>  <b>MOUNTING OPTIONS</b>  <b>WIRING</b>  <b>TOOLS</b>   <b>WIND LOAD (EPA)</b> <b>CORROSION RESISTANT</b>	W 10.57" x H 16.04" x L 10.17"; (268.5 mm x 407.5 mm x 258.2 mm) EXTRUDED ALUMINUM; UV STABILIZED POLYCARBONATE; STAINLESS STEEL FASTENERS 17.2 LBS / 7.8 KG OUTDOOR • UL CERTIFIED FOR WET LOCATIONS IP66 IMPACT RATED TO IK10 MEETS 3G ANSI C136.31 VIBRATION STANDARD FOR BRIDGE APPLICATIONS WHEN USED WITH SURFACE MOUNT TENON ACCESSORY. (SOLD SEPARATELY) C - EXTERNAL CABLE BOTTOM EXIT; 2-3/8" TENON MOUNT; UL LISTED E - EXTERNAL CABLE BOTTOM EXIT; 2-3/8" TENON MOUNT; CE LISTED LENGTH OF EXTERIOR CABLE 10' (3.05 m) SCREWS TO REPLACE THE LENS AND BEZEL:   HEX 3 mm; 1.25 ± 0.25 Nm SCREWS FOR MACRO LOCK™ PAN AND TILT:   HEX 5 mm; 27.0 ± 2.0 Nm SCREW FOR MAIN TILT ARM:                   HEX 6 mm; 27.0 ± 2.0 Nm SET SCREWS FOR TENON MOUNT:           HEX 4 mm; 9.5 ± 0.5 Nm EFFECTIVE PROJECTED AREA 2 H=0.74 ft²; 2V=0.93 ft² RISE HAS A HIGH-PERFORMING, CORROSION-RESISTANT FINISH THAT USES HIGH DURABILITY TRIGLYCIDYL ISOCYANURATE (TGIC) POWDER COATINGS SPECIFICALLY DESIGNED FOR NATATORIUMS AND EXTERIOR WEATHER EXPOSURE. THIS FINISH HAS BEEN TESTED AND APPROVED TO MARINE GRADE CORROSION RESISTANCE STANDARD IN UL1598A, ASTM B117 SALT FOG TEST FOR 200 HOURS.	

**FIXTURE RATING & CERTIFICATIONS**   CE, UL CERTIFIED  
RoHS COMPLIANT, IK10



**LIMITED WARRANTY**   5 YEARS

**0-10V CONTROL OPTIONS**

100-120 VAC / 277 VAC Linear Dimming Control Module 0-10 V - Plenum Rated ..... LDCM-PL-120-277-010V-GR

All products come standard with ELV dimming capabilities. 0-10 V Control options required for operation at 0-10 V.

**OPTIONAL ACCESSORIES**

**Snoots**  
 Half Snoot, Color Finish (K=Black, Z=Bronze, S=Silver, W=White, C=Custom) ..... F170-H-(K,Z,S,W,C)  
 Full Snoot, Color Finish (K=Black, Z=Bronze, S=Silver, W=White, C=Custom) ..... F170-F-(K,Z,S,W,C)

**Interchangeable Lens**

**If inner optic = 5°,**  
**Desired angle** ..... **Order the following spread lens**  
 5 Degree ..... F170-LENS-05  
 10 Degree ..... F170-LENS-10  
 15 Degree ..... F170-LENS-15  
 20 Degree ..... F170-LENS-20  
 40 Degree ..... F170-LENS-40  
 60 Degree ..... F170-LENS-60  
 80 Degree ..... F170-LENS-80  
 15x60 or 60x15 Degree ..... F170-LENS-E1E3  
 30x60 or 60x30 Degree ..... F170-LENS-E2E4  
 Full Set of Beam Angle Lens Degree (5, 10, 15, 20, 40, 60, 80, 15X60 or 60X15, 30X60 or 60X30) ..... F170-LENS-FULLSET

NOTE: Information on this Spec Sheet is subject to change, please visit [ecosenselighting.com/downloads/raise](http://ecosenselighting.com/downloads/raise) for the most updated information.



**ECOSENSE LIGHTING INC.**  
 837 NORTH SPRING STREET  
 SUITE 103  
 LOS ANGELES, CA 90012

**P • 310.496.6255**  
**F • 310.496.6256**  
**T • 855.632.6736**  
 855.6.ECOSEN

SPECIFICATIONS SUBJECT TO CHANGE WITHOUT NOTICE. VISIT [ECOSENSELIGHTING.COM](http://ECOSENSELIGHTING.COM) FOR THE MOST CURRENT SPECIFICATIONS. FOR A LIST OF PATENTS VISIT [ECOSENSELIGHTING.COM/IP-PORTFOLIO/](http://ECOSENSELIGHTING.COM/IP-PORTFOLIO/)  
 ©2019 ECOSENSE LIGHTING INC. ALL RIGHTS RESERVED. ECOSENSE, THE ECOSENSE LOGO, TROV, TROV AND ECOSPEC ARE REGISTERED TRADEMARKS OF ECOSENSE LIGHTING INC.  
 RISE™, SLIM COVER™, FREEDOM TO CREATE™, MACRO™, FLIP-TO-FLAT™ ARE TRADEMARKS OF ECOSENSE LIGHTING INC.

DATE	PROJECT	FIRM	TYPE
------	---------	------	------

**If inner optic = 40°,**

<b>Desired angle</b> .....	<b>Order the following spread lens</b>
5 Degree .....	NOT SUPPORTED
10 Degree .....	NOT SUPPORTED
15 Degree .....	NOT SUPPORTED
20 Degree .....	NOT SUPPORTED
40 Degree .....	F170-LENS-10
60 Degree .....	F170-LENS-40
70 Degree .....	F170-LENS-60
90 Degree .....	F170-LENS-80
15x60 or 60x15 Degree .....	NOT SUPPORTED
30x60 or 60x30 Degree .....	NOT SUPPORTED
Full Set of Beam Angle Lens Degree (5, 10, 15, 20, 40, 60, 80, 15X60 or 60X15, 30X60 or 60X30) .....	F170-LENS-FULLSET

**Honeycomb Louver**

Honeycomb Louver F170.....	F170-LV-HComb
----------------------------	---------------

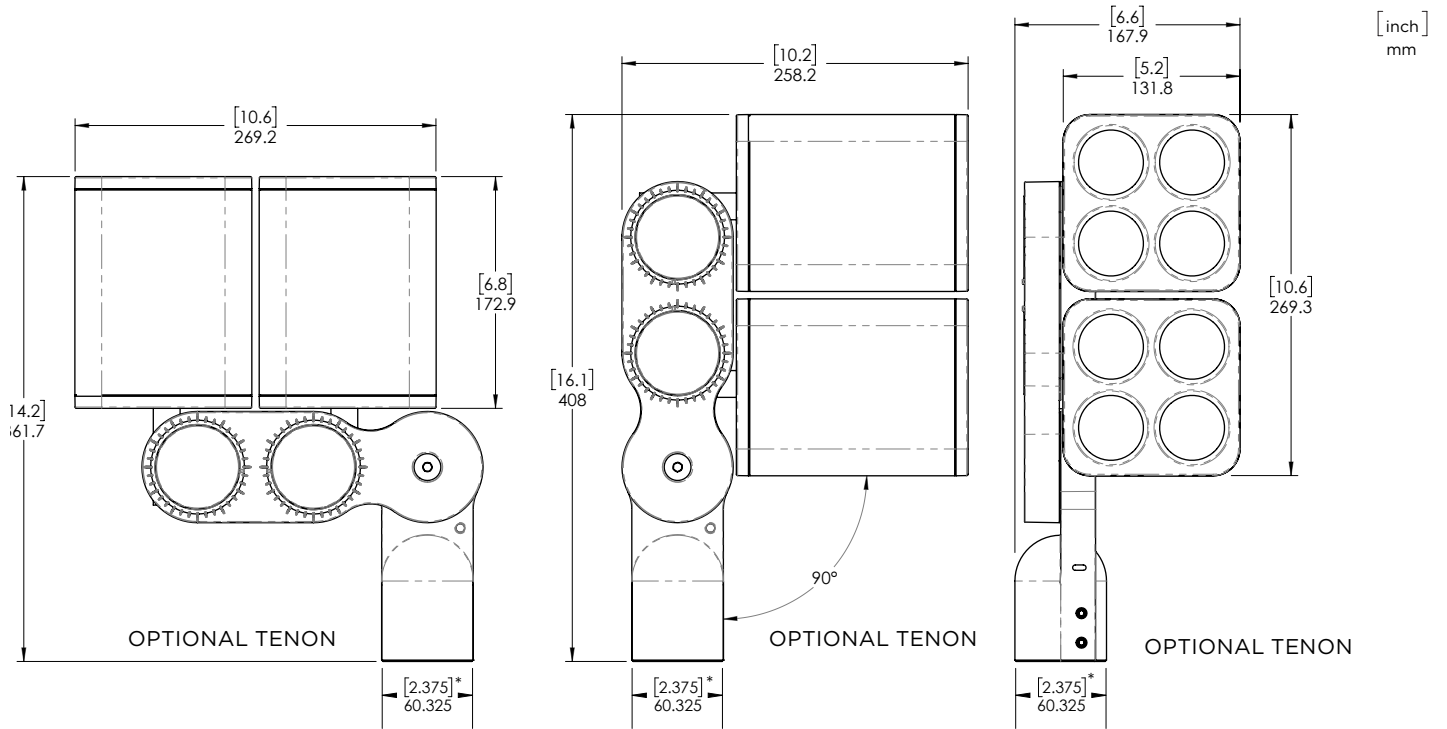
**Color Filters**

Red .....	F170-FILTER-RED
Blue .....	F170-FILTER-BLUE
Green .....	F170-FILTER-GREEN
Amber .....	F170-FILTER-AMBER

**Surface Mount Tenon**

F170 and F380 Multi-Up Surface Mount Tenon (K=Black, Z-Bronze, S-Silver, W-White, C=Custom) .....	RISE-MULTI-SMP-(K,Z,S,W,C)
Surface Mount Tenon is required for F170 Duo 3G Bridge installations	

**DIMENSIONS - F170 2V (VERTICAL)**

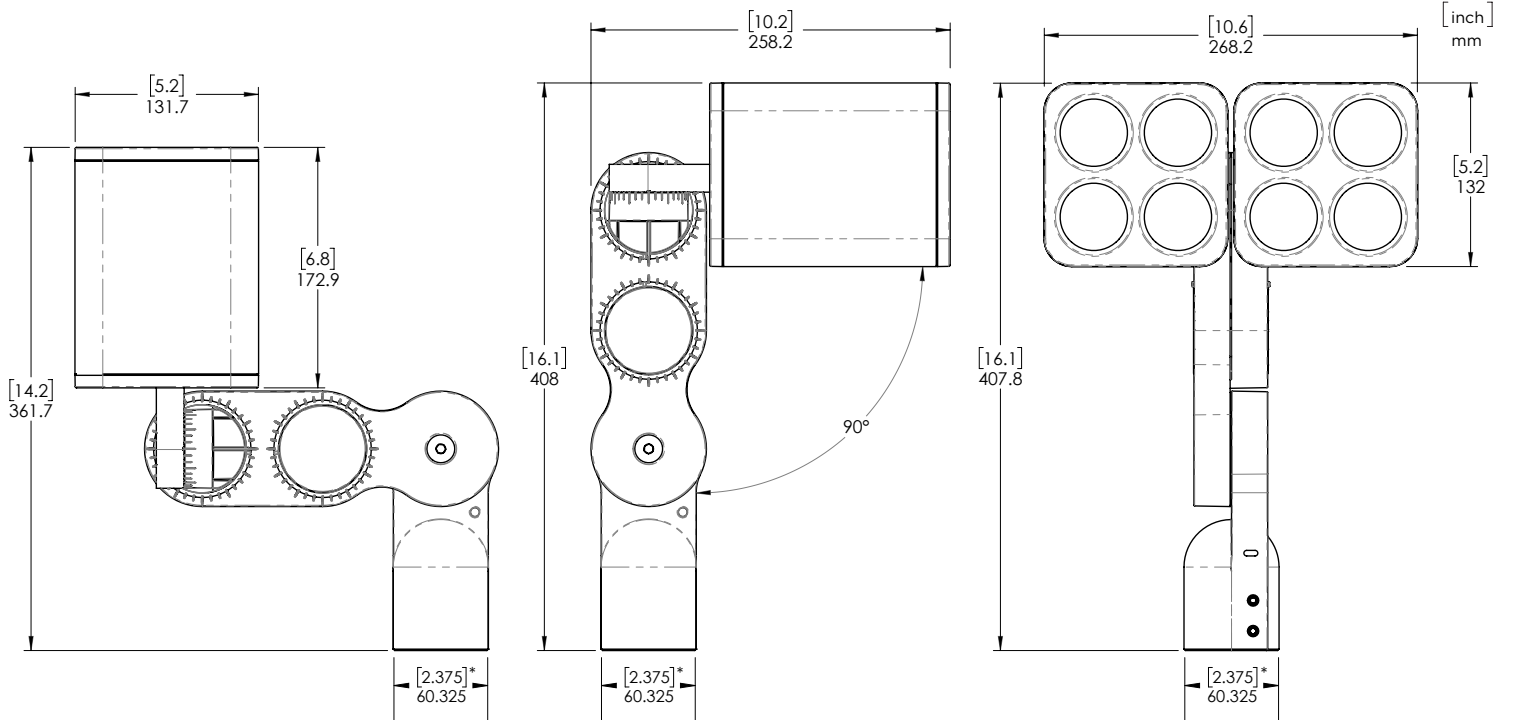


\*FITS STANDARD 2" (50.8 mm) TENON WITH A 2 3/8" (60.325 mm) OUTER DIAMETER

NOTE: Information on this Spec Sheet is subject to change, please visit [ecosenselighting.com/downloads/raise](https://ecosenselighting.com/downloads/raise) for the most updated information.

DATE	PROJECT	FIRM	TYPE
------	---------	------	------

**DIMENSIONS - F170 2H (HORIZONTAL)**



\*FITS STANDARD 2" (50.8 mm) TENON WITH A 2 3/8" (60.325 mm) OUTER DIAMETER

NOTE: Information on this Spec Sheet is subject to change, please visit [ecosenselighting.com/downloads/rise](https://ecosenselighting.com/downloads/rise) for the most updated information.