

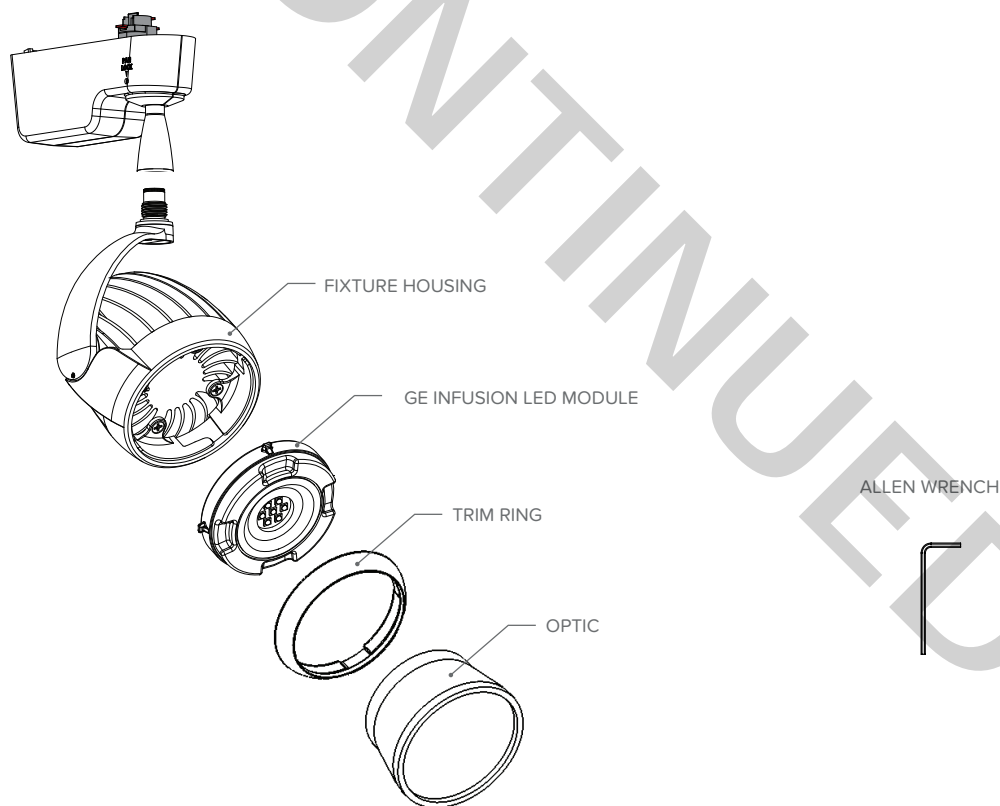
IMPORTANT SAFETY INSTRUCTIONS

When Installing or using this track luminaire, basic safety precautions should always be followed, including the following:

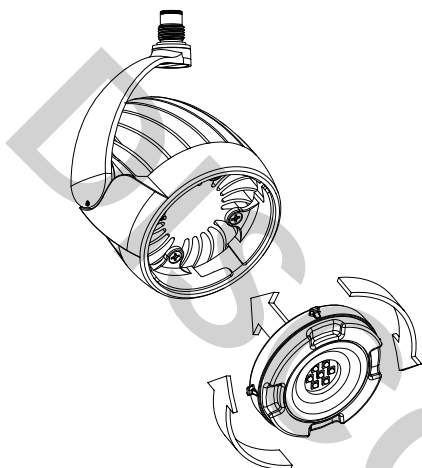
1. Read all instructions
2. Do not install any luminaire assembly closer than 6 inches from any curtain or similar combustible material.

FOR USE WITH TRACK LIGHTING MODEL SERIES GES 2, GET 3, & L-64, L-65 MANUFACTURED BY NORDIC ALUMINUM & COOPER HALO ONLY.

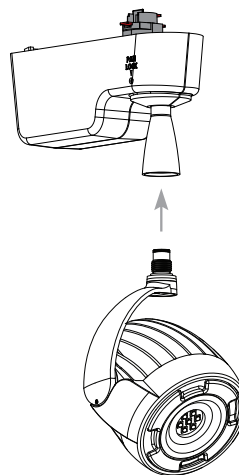
SAVE THESE INSTRUCTIONS



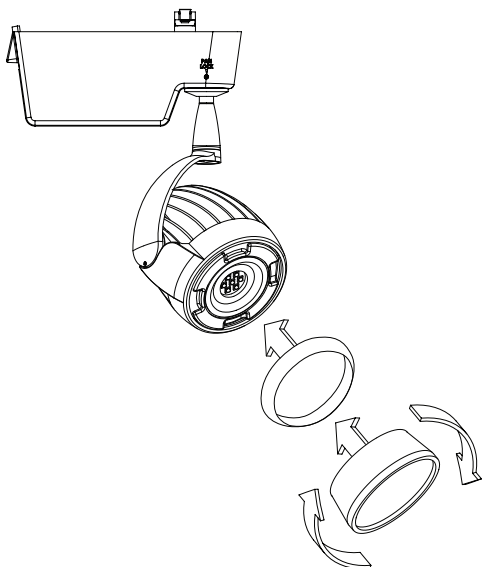
- 1) Insert GE Infusion LED Module and twist clockwise.



- 2) Thread the Zinnia onto the Track Adapter.



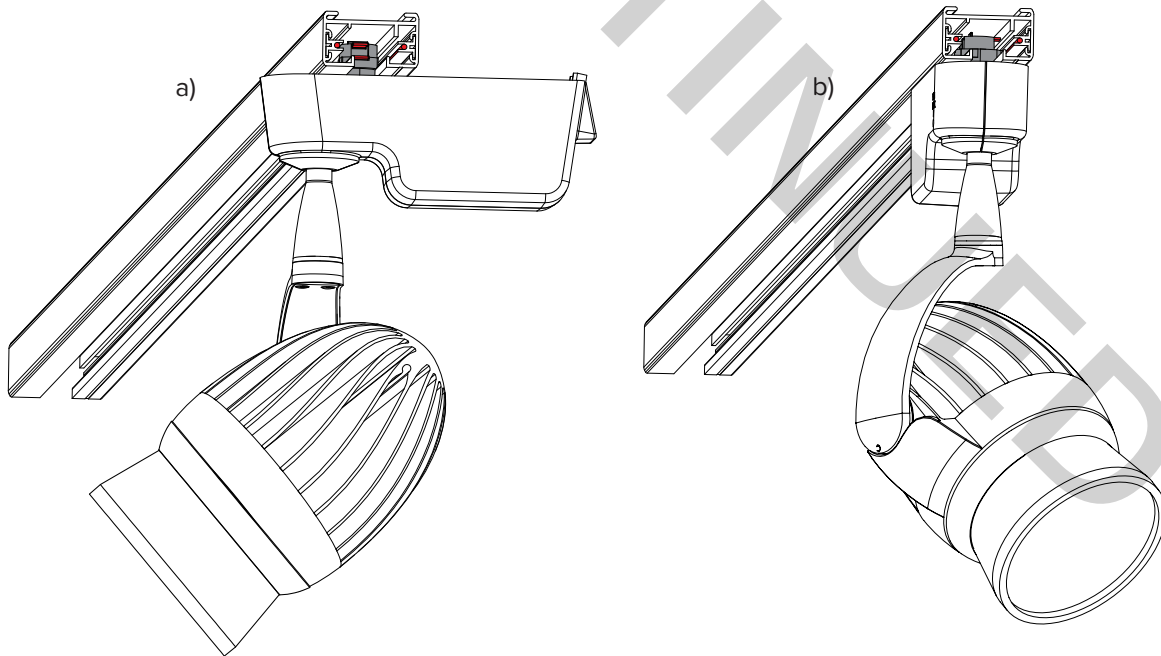
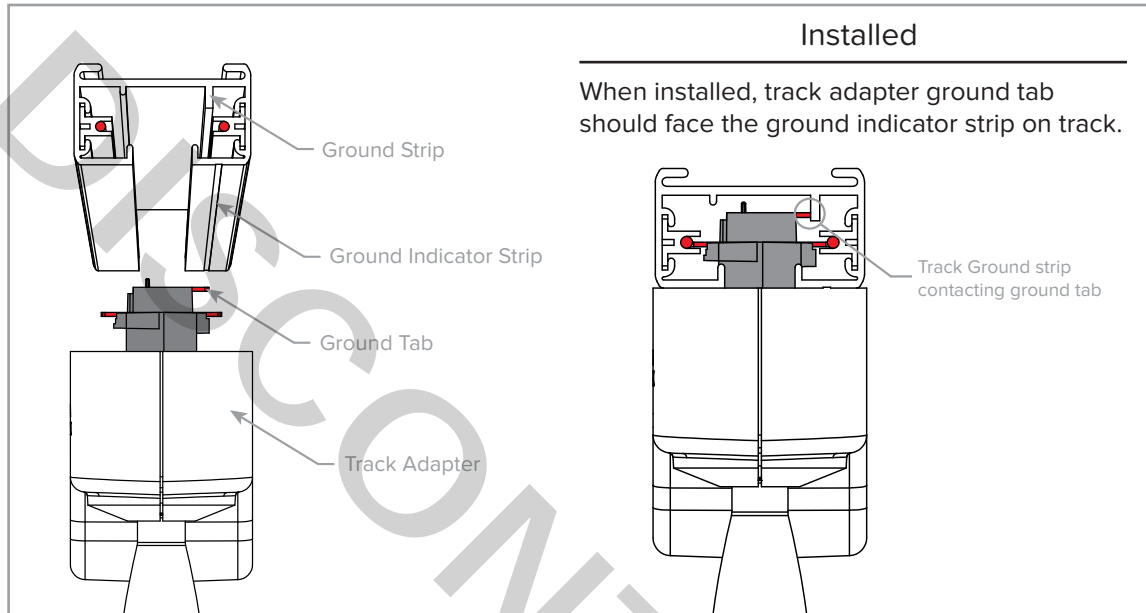
- 3) Place trim ring on fixture then place optic on top and twist clockwise.



SAVE THESE INSTRUCTIONS



4) Twist the track adapter into the track.

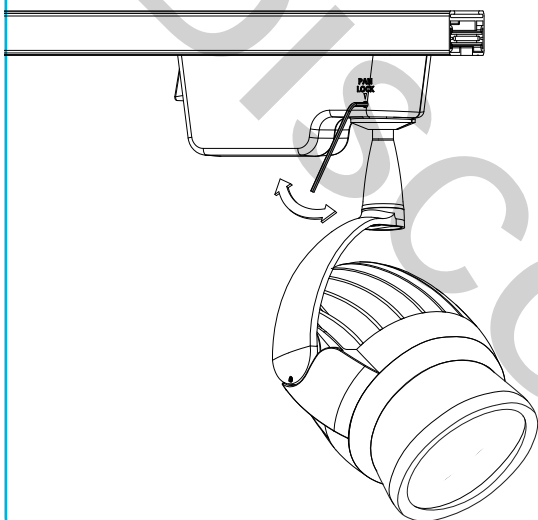


SAVE THESE INSTRUCTIONS

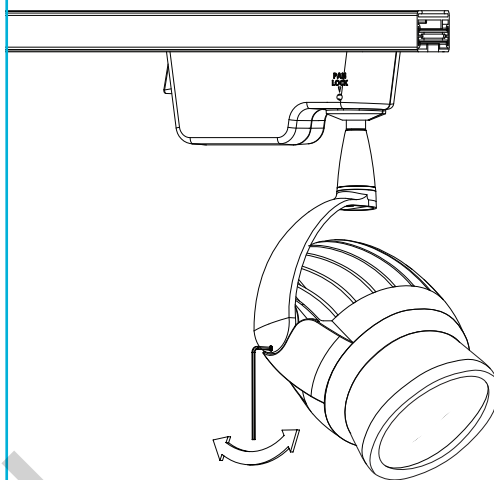


Tilt Lock and Pan Lock Instructions (Optional)

- 1) Set Zinnia into its proper horizontal orientation, then use the allen wrench to tighten the pan-lock set screw.



- 2) Set Zinnia into its proper tilt orientation, then use the allen wrench to tighten the tilt-lock set screw.



SAVE THESE INSTRUCTIONS

WWW.JOURNEELIGHTING.COM

TELEPHONE 800-886-1880 — FAX 800-886-1881

4607 Lakeview Canyon Rd #500 - Westlake Village, CA 91361