

DATE	PROJECT	FIRM	TYPE
------	---------	------	------

TROV CABLES HAVE MULTIVOLT SUPPORT - 110 TO 277 VAC. ONE LEADER CABLE IS NEEDED PER CIRCUIT/FIXTURE RUN

FEATURES :

- COMPATIBLE WITH L35 AND L50 SERIES FIXTURES
- AVAILABE IN 1', 5', 10' AND 50' LENGTHS
- EACH CABLE COMES WITH A MALE CONNECTOR ON ONE END AND A FEMALE CONNECTOR ON THE OTHER
- 10' AND 50' CABLES CAN BE USED AS LEADER CABLES. THEY COME WITH TWO TERMINATOR CAPS - MALE AND FEMALE
- 1' AND 5' ARE INTENDED AS JUMPER CABLES NEED TO ORDER TERMINATOR CAPS SEPARATELY TO USE THESE AS LEADER CABLES
- ALSO AVAILABLE ARE 1' CABLES WITH SAME CONNECTORS ON BOTH ENDS
- NOT PLENUM RATED



PHYSICAL	DIMENSIONS	Nominal OD 0.300", Length 1'/5'/10'/50' ; (OD 7.62mm, L 0.304m/1.524m/3.048m/15.24m)
	MATERIAL	Cable 14 AWG 19x.0126" BC, 15 mils PVC insulation, tissue paper separator, 30 mils pressured UV Res. black PVC jacket Connector Mold using Santoprene, 101-80 Black (80A Hardness), Insert glass reinforced, Polyamide 66, Black-Mapex A0520FN or equivalent

ONE LEADER CABLE IS REQUIRED PER FIXTURE RUN. THE FOLLOWING TABLE SHOWS THE MAXIMUM NUMBER OF FIXTURES PER RUN

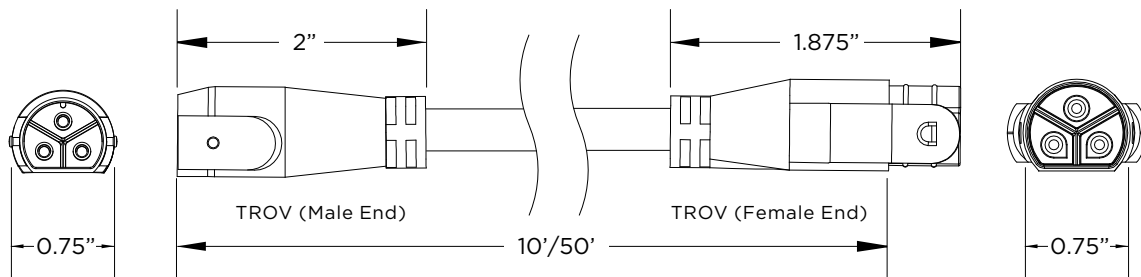
MAX FIXTURE RUN LENGTH

Volts	2W/LF		4W/LF		6W/LF		8W/LF		10W/LF		12W/LF	
	Max Run all 1'	Max Run all 4'	Max Run all 1'	Max Run all 4'	Max Run all 1'	Max Run all 4'	Max Run all 1'	Max Run all 4'	Max Run all 1'	Max Run all 4'	Max Run all 1'	Max Run all 4'
120	214	214	186	186	152	152	114	114	91	91	76	76
220	374	392	340	340	277	277	209	209	95	167	95	139
277	374	494	374	428	349	349	263	263	95	190	95	175

Ensure power is OFF
Assurez que la puissance est sur OFF

CBL-3P-L-UNV-10 / CBL-3P-L-UNV-50 - TROV LEADER CABLE

Intended to be used as leader cables. Comes with two terminator caps - Female and Male



LIMITED WARRANTY 5 YEARS

ECOSENSE LIGHTING INC.
837 NORTH SPRING STREET
SUITE 103
LOS ANGELES, CA 90012

P • 310.496.6255
F • 310.496.6256
T • 855.632.6736
855.6.ECOSEN

SPECIFICATIONS SUBJECT TO CHANGE WITHOUT NOTICE. VISIT ECOSENSELIGHTING.COM FOR THE MOST CURRENT SPECIFICATIONS.
© 2017 ECOSENSE LIGHTING INC. ALL RIGHTS RESERVED. ECOSENSE, THE ECOSENSE LOGO, RISE, TROV AND ECOSPEC ARE REGISTERED TRADEMARKS OF ECOSENSE LIGHTING INC.
FREEDOM TO CREATE™

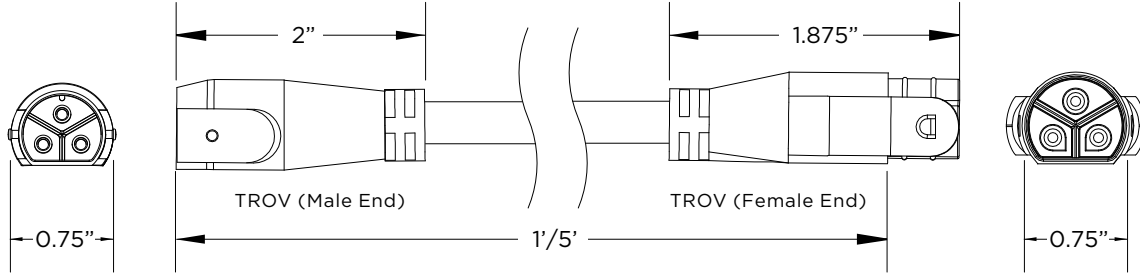
ECOSENSELIGHTING.COM

1/2

DATE	PROJECT	FIRM	TYPE
------	---------	------	------

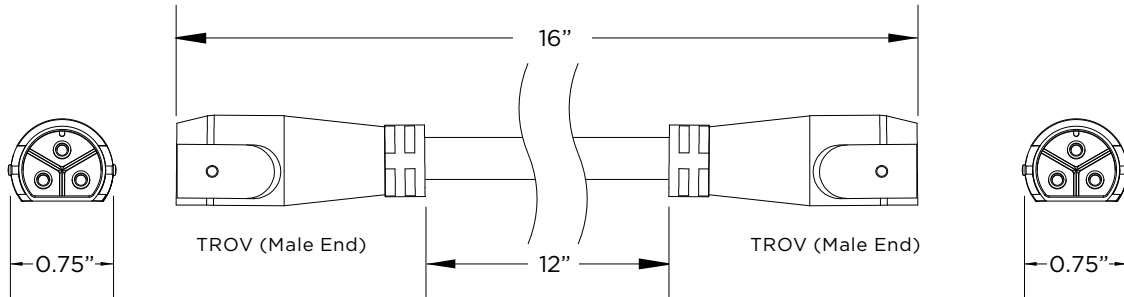
CBL-3P-L-UNV-1 / CBL-3P-L-UNV-5 - TROV JUMPER CABLES

Intended to be used as jumper cables. Need to order terminator caps separately if these are used as leader cables



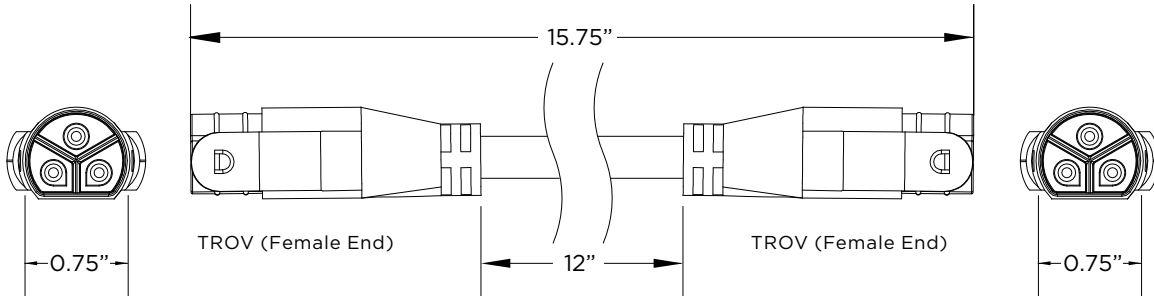
CBL-3P-L-UNV-01-MM - TROV Male to Male Connector

For use when connecting a TROV run that ends with a female connector to a run that starts with a female connector



CBL-3P-L-UNV-01-FF - TROV Female to Female Connector

For use when connecting a TROV run that ends with a male connector to a run that starts with a male connector



ORDERING

PART NUMBER	DESCRIPTION
CBL-3P-L-UNV-50	50 FOOT LEADER CABLE FOR TROV FIXTURES
CBL-3P-L-UNV-10	10 FOOT LEADER CABLE FOR TROV FIXTURES
CBL-3P-L-UNV-5	5 FOOT JUMPER CABLE FOR TROV FIXTURES
CBL-3P-L-UNV-1	1 FOOT JUMPER CABLE FOR TROV FIXTURES
CBL-3P-L-UNV-1-MM	1 FOOT MALE TO MALE CONNECTOR
CBL-3P-L-UNV-1-FF	1 FOOT FEMALE TO FEMALE CONNECTOR