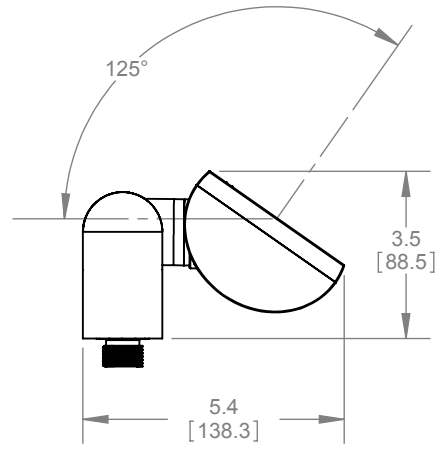
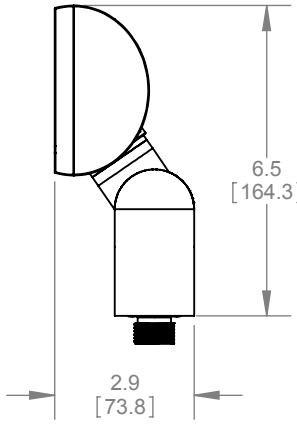
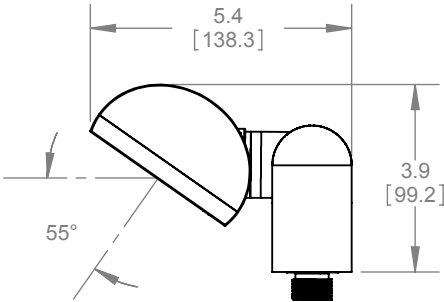
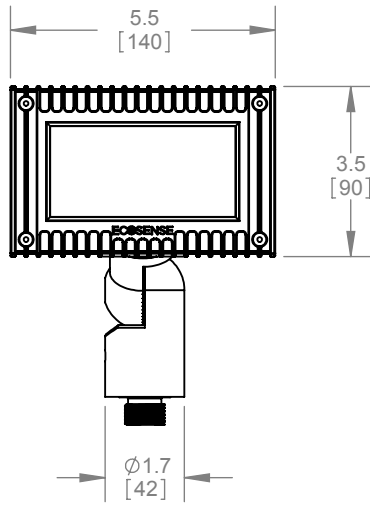
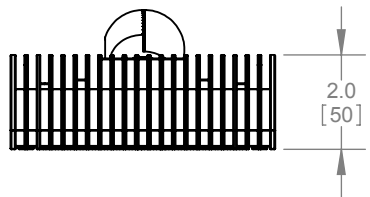
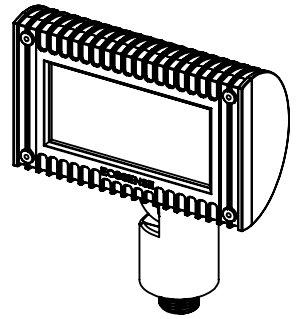


ORDERING INFORMATION		EXAMPLE: ES06-MF-35-120-45-WH		
<i>ES06-MF</i> - - - -				
MODEL	COLOR	VOLTAGE*	OPTIC	FINISH
ES06-MF	27 (2700K)	120 (100-120VAC)	45 (45°x 45°)	WH (WHITE)
	35 (3500K)	220 (220-240VAC)	90 (90°x 90°)	BK (BLACK)

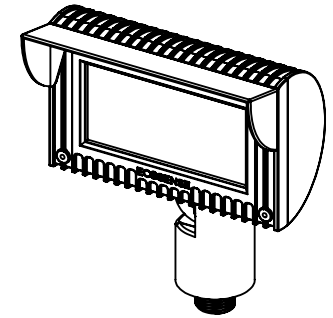
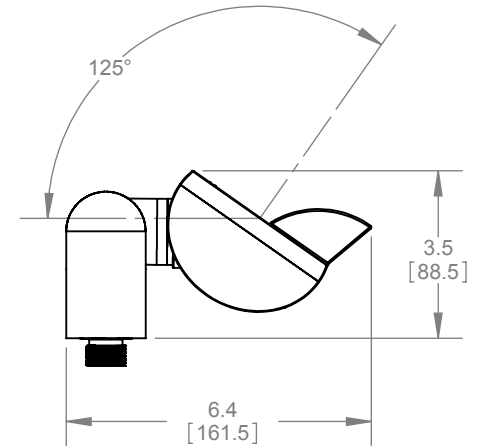
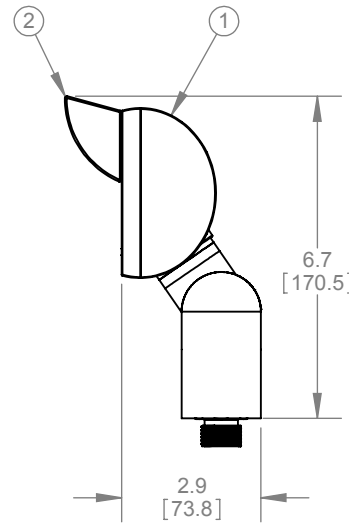
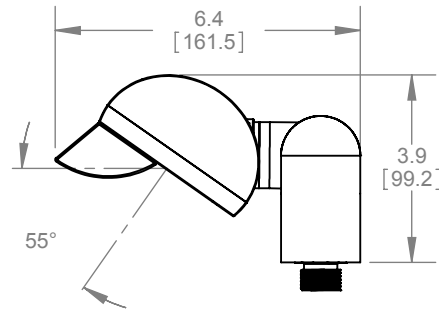
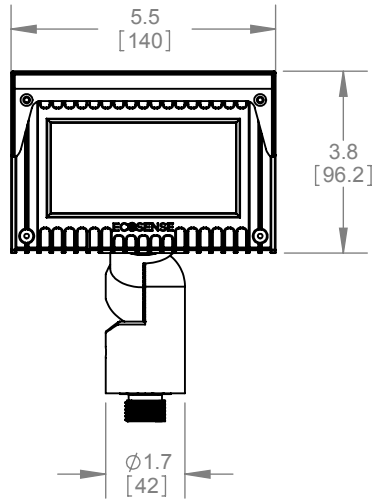
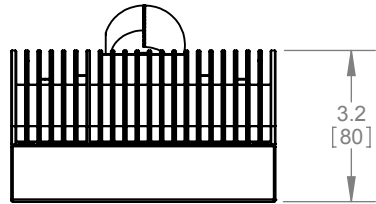
*120 - INCLUDES 1/2"NPT MOUNTING THREADS
 220 - INCLUDES 20mm MOUNTING THREADS



ADJUSTABLE AIMING
 55° FORWARD & 125° REARWARD
 5° INCREMENTS

PROPRIETARY AND CONFIDENTIAL THE INFORMATION CONTAINED IN THIS DRAWING IS THE SOLE PROPERTY OF ECOSENSE LIGHTING. ANY REPRODUCTION IN PART OR AS A WHOLE WITHOUT THE WRITTEN PERMISSION OF ECOSENSE LIGHTING IS PROHIBITED.	ECOSENSE ECOSENSE LIGHTING, INC. 159 RIVINGTON STREET NEW YORK, NY 10002-2434 TEL: 888.632.6736 FAX: 212.228.9113 INFO@ECOSENSELIGHTING.COM WWW.ECOSENSELIGHTING.COM	UNLESS OTHERWISE SPECIFIED		DRAWN	DATE	DESCRIPTION	
		DIMENSIONS IN INCHES/MM		CHECKED	DATE	EcoSpec LANDSCAPE MINI-FLOOD	
		.XX ± .01" / .25MM ANGLE ± 1° .XXX ± .005" / .15MM FRACTION ± 1/64" INTERPRET ACCORDING TO ASME Y14.5		MATERIAL	DATE		DWG. NO.
		THIRD ANGLE PROJECTION		ALUMINUM - GLASS	12-06-11	LANDSCAPE MINI FLOOD - SPEC - 120611	
		FINISH	ELECTROSTATIC POWDER COAT	DO NOT UPDATE MANUALLY	SCALE	SIZE	SHEET
					1:4	A	1 OF 3

ACCESSORY HOOD



ADJUSTABLE AIMING
55° FORWARD & 125° REARWARD
5° INCREMENTS

ITEM NO.	PART NUMBER	DESCRIPTION	QTY
1	ES06-MF-XX-XXX-XX-XX	EcoSpec LANDSCAPE MINI FLOOD	1PC
2	06-A-HD-WH <u>OR</u> 06-A-HD-BK	ACCESSORY HOOD (WHITE/BLACK)	1PC

PROPRIETARY AND CONFIDENTIAL

THE INFORMATION CONTAINED IN THIS DRAWING IS THE SOLE PROPERTY OF ECOSENSE LIGHTING. ANY REPRODUCTION IN PART OR AS A WHOLE WITHOUT THE WRITTEN PERMISSION OF ECOSENSE LIGHTING IS PROHIBITED.



ECOSENSE LIGHTING, INC.
159 RIVINGTON STREET
NEW YORK, NY 10002-2434
TEL: 888.632.6736 FAX: 212.228.9113
INFO@ECOSENSELIGHTING.COM
WWW.ECOSENSELIGHTING.COM

UNLESS OTHERWISE SPECIFIED

DIMENSIONS IN
INCHES/MM

.XX ± .01" / .25MM ANGLE ± 1°
.XXX ± .005" / .15MM FRACTION ± 1/64"
INTERPRET ACCORDING TO ASME Y14.5



DRAWN

DATE 12-06-11

CHECKED

DATE 12-06-11

MATERIAL

ALUMINUM - GLASS

FINISH

ELECTROSTATIC POWDER COAT

DESCRIPTION

**EcoSpec
LANDSCAPE MINI FLOOD**

DWG. NO

LANDSCAPE MINI FLOOD - SPEC - 120611

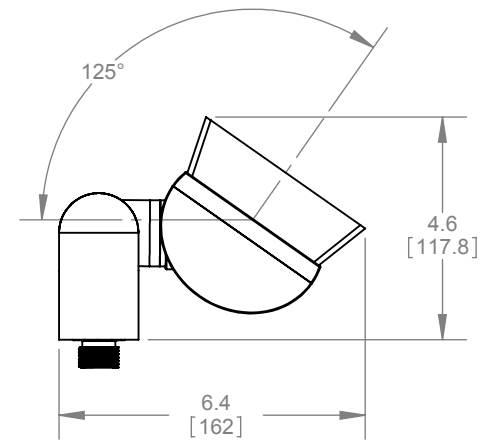
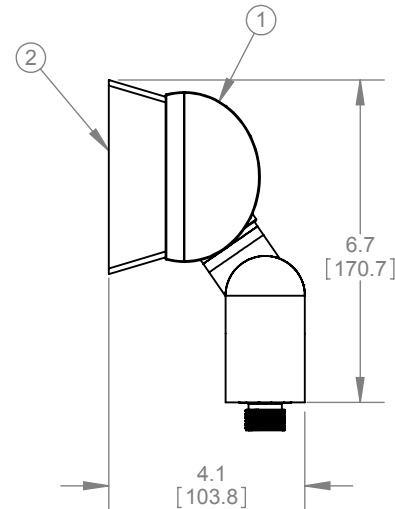
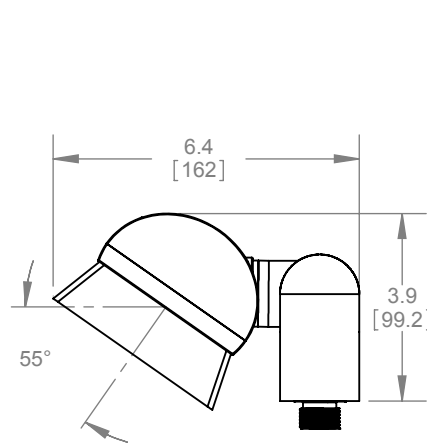
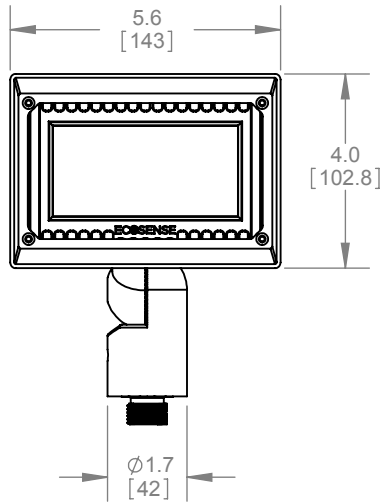
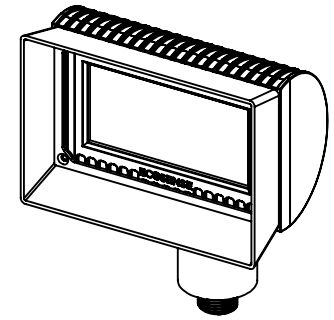
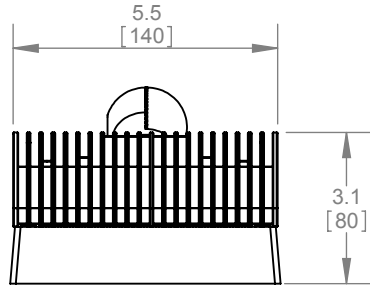
DO NOT UPDATE
MANUALLY

SCALE 1:4

SIZE A

SHEET 2 OF 3

ACCESSORY BARN DOOR



ADJUSTABLE AIMING
55° FORWARD & 125° REARWARD
5° INCREMENTS

ITEM NO.	PART NUMBER	DESCRIPTION	QTY
1	ES06-MF-XX-XXX-XX-XX	EcoSpec LANDSCAPE MINI FLOOD	1PC
2	06-A-BD-WH <u>OR</u> 06-A-BD-BK	ACCESSORY BARN DOOR (WHITE/BLACK)	1PC

PROPRIETARY AND CONFIDENTIAL

THE INFORMATION CONTAINED IN THIS DRAWING IS THE SOLE PROPERTY OF ECOSENSE LIGHTING. ANY REPRODUCTION IN PART OR AS A WHOLE WITHOUT THE WRITTEN PERMISSION OF ECOSENSE LIGHTING IS PROHIBITED.



ECOSENSE LIGHTING, INC.
159 RIVINGTON STREET
NEW YORK, NY 10002-2434
TEL: 888.632.6736 FAX: 212.228.9113
INFO@ECOSENSELIGHTING.COM
WWW.ECOSENSELIGHTING.COM

UNLESS OTHERWISE SPECIFIED

DIMENSIONS IN
INCHES/MM

.XX ± .01"/.25MM ANGLE ± 1°
.XXX ± .005"/.15MM FRACTION ± 1/64"
INTERPRET ACCORDING TO ASME Y14.5



DRAWN	DATE 12-06-11
CHECKED	DATE 12-06-11
MATERIAL	ALUMINUM - GLASS
FINISH	ELECTROSTATIC POWDER COAT

DESCRIPTION			
EcoSpec LANDSCAPE MINI FLOOD			
DWG. NO			
LANDSCAPE MINI FLOOD - SPEC - 120611			
DO NOT UPDATE MANUALLY	SCALE 1:4	SIZE A	SHEET 3 OF 3