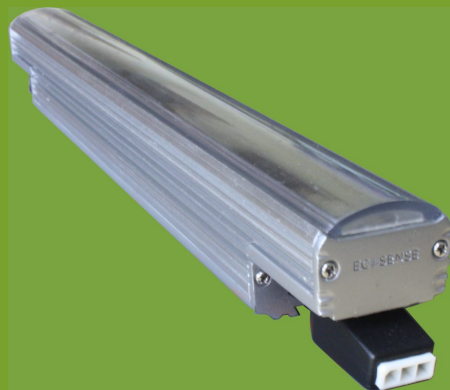


Features

Dimmable
Flicker-Free
In-line Connection
Long Life
Instant On
RoHS Compliant
Lead Free
Mercury Free
No UV

ECOSENSE™



PRELIMINARY

EcoSense Lighting Inc.

159 Rivington Street
New York, NY 10002-2434

www.ecosenselighting.com

Phone 212-228-8118
Fax 212-228-9113
Toll Free 888.632.6736
888.6.ECOSEN



(V. 7-2010)

DATE:

TYPE:

PROJECT:

FIRM :

EcoSpec™ Linear HP INT

EcoSense™ EcoSpec™ Linear HP INT is an ultra-bright indoor linear white light fixture. Brighter than fluorescent tubes, these flicker-free dimmable with ELV dimmers fixtures offer an earth-friendly, mercury-free cove solution.

Leveraging years of lighting experience, this robust aluminum frame fixture features powerful, energy efficient LEDs and precision constant current circuits for long-life applications.

With smart power technology, EcoSpec™ Linear HP INT connects directly to AC power; simplifying installation and minimizing costs. These long-life fixtures quickly pay for themselves in energy savings and maintenance costs, providing substantial savings over the 50,000 hour life of the lamp.

Specifications

Lumen Output

Warm White	570 lm (1ft) / 2280 lm (4ft)
Neutral White	655 lm (1ft) / 2620 lm (4ft)

Color Temperature

Warm White	2700K
Warm White	3000K
Neutral White	4000K

Color Rendering Index

Warm White	80
Neutral White	80

Rated Life

50,000 hours

Beam Angle

60° x 60°, 120° x 120°

Power Consumption

12W/LF - 12W(1ft) / 48W(4ft)

Maximum Fixture Run Length

60' @ 120VAC / 100' @ 220VAC

Operating Temperature

14°F to 104°F (-10°C to 40°C)

Operating Voltage

100-120VAC, 220-240VAC, 50-60Hz

Housing

Aluminum; Clear Polycarbonate Diffuser

Weight

6 oz/175g (1ft)
1.5 lbs./0.7kg (4ft) approx.

Dimensions

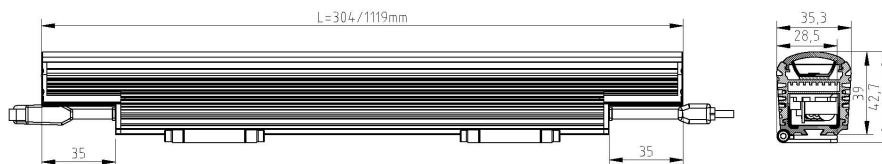
W 1.4" x H 1.5" x L 12"/48"
(35.3 mm x 39 mm x 304 mm/1,219 mm)

Certifications (Pending)



Restriction of Hazardous Substances Directive (RoHS) implements EU Directive 2002/95 which bans placing electrical and hazardous equipment that contains more than agreed levels of hazardous substances on the EU market. For a list of these substances visit www.rohs.gov.uk.

Dimensions



www.ecosenselighting.com

EcoSpec™

Linear HP INT

DATE:	TYPE:
PROJECT:	
FIRM :	

Ordering Information Choose the option that best suits your needs and write its corresponding code on the appropriate line to form the product code.

ES05-LC	-	-	-	-
MODEL	LENGTH	COLOR	VOLTAGE	OPTIC
ES05-LC	12 - 1'-0" 48 - 4'-0"	27 - 2700K 30 - 3000K 40 - 4000K	120 - 100-120VAC 220 - 220-240VAC	60 - 60° x 60° 120 - 120° x 120°

** Order mounting and wiring accessories as separate catalogue numbers available on the **EcoSense Accessory** cut sheet.

EXAMPLE: ES05-LC-12-27-120-60

Accessories Also found on the EcoSense Wiring and Mounting Accessory cut sheet.

Leader Cable 10'-0" (UL)	ES04-A-CBL-UL-10	Leader Cable 10'-0" (CE)	ES04-A-CBL-CE-10
Jumper Cable 1'-0" (UL)	ES04-A-JMP-UL-1	Jumper Cable 1'-0" (CE)	ES04-A-JMP-CE-1
Jumper Cable 5'-0" (UL)	ES04-A-JMP-UL-5	Jumper Cable 5'-0" (CE)	ES04-A-JMP-CE-5
Mounting Track (4'-0" Length)	ES04-A-MNT-TRK-4		
Adjustable Mounting Clips (Set of 2)	ES04-A-MNT-ADJ-2		

EcoSpec™

Linear HP INT

DATE: _____
 PROJECT: _____
 FIRM : _____

TYPE: _____

Photometry Characteristics

Characteristics	
Total Rated Fixture Lumens	670
Total Luminaire Efficiency	99.4%
IES NEMA Type	7H x 7V
Total Input Watts	12.3
Horizontal Beam Angle (50%)	112.0
Vertical Beam Angle (50%)	110.6
Horizontal Field Angle (10%)	149.8
Vertical Field Angle (10%)	155.7

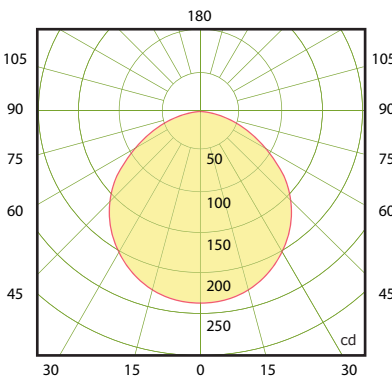
Luminance Data (cd/sq. m)			
Angle In Degrees	Average 0°	Average 45°	Average 90°
0	23060	23060	23060
45	21898	22862	22929
55	20364	21939	21414
65	17363	18788	16950
75	11818	10655	10716
85	3637	3455	3819

Photometrics by an independant lab in accordance with current IES published Procedures.

IES data is available at www.ecosenselighting.com

Fixture: ES05-LC-12-27-VOLT-120

Candela Distribution



Coefficients of Utilization

RC	80			70			50			30			10			0		
	RW	70	50	30	10	70	50	30	10	50	30	10	50	30	10	0		
0	1.18	1.18	1.18	1.18	1.15	1.15	1.15	1.15	1.10	1.10	1.10	1.05	1.05	1.05	1.01	1.01	.99	
1	1.09	1.05	1.01	.97	1.06	1.02	.99	.95	.98	.95	.92	.94	.92	.90	.90	.89	.87	.85
2	.99	.92	.85	.80	.97	.90	.84	.79	.86	.81	.77	.83	.79	.75	.80	.76	.73	.71
3	.91	.81	.73	.67	.88	.79	.72	.66	.76	.70	.65	.73	.68	.64	.71	.66	.63	.60
4	.83	.72	.63	.57	.81	.70	.62	.56	.68	.61	.56	.65	.59	.55	.63	.58	.54	.52
5	.77	.64	.56	.49	.74	.63	.55	.49	.61	.54	.48	.59	.52	.47	.57	.51	.47	.45
6	.71	.58	.49	.43	.69	.57	.48	.42	.55	.48	.42	.53	.47	.42	.52	.46	.41	.39
7	.66	.53	.44	.38	.64	.51	.43	.38	.50	.43	.37	.48	.42	.37	.47	.41	.37	.35
8	.61	.48	.39	.34	.59	.47	.39	.33	.46	.38	.33	.44	.38	.33	.43	.37	.33	.31
9	.57	.44	.36	.30	.55	.43	.35	.30	.42	.35	.30	.41	.34	.30	.40	.34	.30	.28
10	.53	.40	.33	.27	.52	.40	.32	.27	.39	.32	.27	.38	.31	.27	.37	.31	.27	.25

PRELIMINARY